



FORMLINE ARCHITECTURE
 1100 10th Street West
 Quesnel, BC V2A 4G5
 T: 250.694.9122/2025 E: info@formline.ca W: www.formline.ca



CITY OF QUESNEL

QUESNEL INDIGENOUS CULTURAL CENTRE
 PRE-DESIGN STUDY

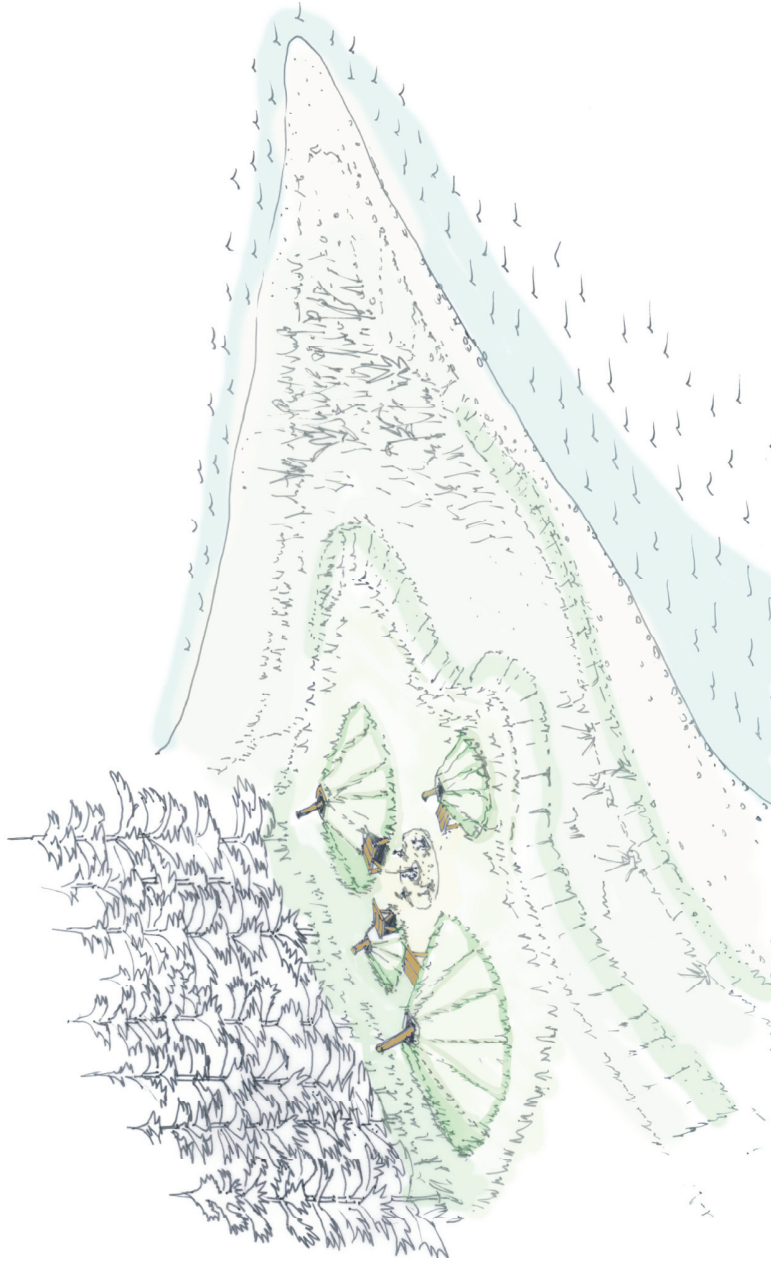
All rights reserved. No part of this document may be reproduced, stored in a retrieval system, or transmitted, in any form or by any means, electronic, mechanical, photocopying, recording, or by any information storage and retrieval system, without the prior written permission of the author. All rights reserved. No part of this document may be reproduced, stored in a retrieval system, or transmitted, in any form or by any means, electronic, mechanical, photocopying, recording, or by any information storage and retrieval system, without the prior written permission of the author.

project code
 18001
 drawn
 MK

status
 DRAFT
 checked
 AW

CONCEPT DESIGN
OPTION B
 scale NTS
 date 2018.12.13

drawing number
P00
 revision



DESIGN CONCEPT

The design concept for the Quesnel Indigenous Cultural Centre derives its cultural precedent from the Pithouse Villages used by the Dene in the Plateau region along the Fraser River. Archaeologists estimate that mobile hunting people transitioned to semi-permanent villages using Pithouse structures around 2,500 B.C. The Dene in this region fished along major water ways including the Fraser River and harvesting of salmon was central to their culture. Pithouse structures are developed in various forms and the more common structure had four supporting poles and 12 main beams.

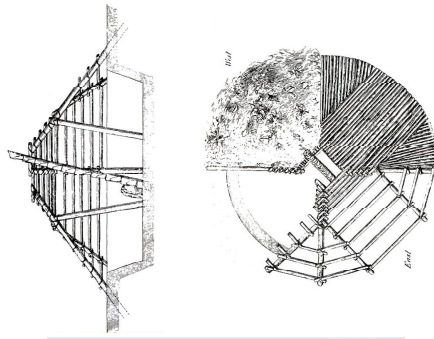
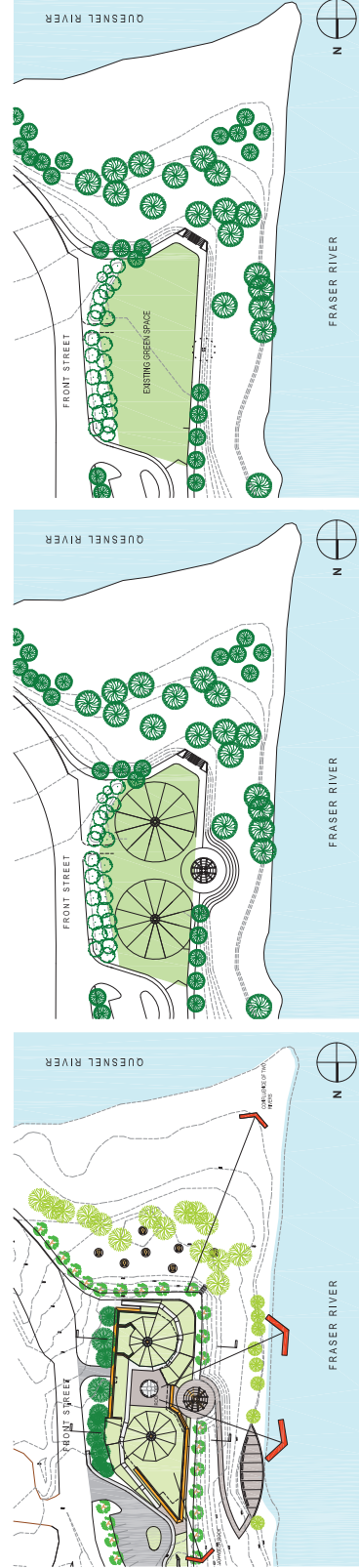
The Cultural Centre is conceived as a Pithouse Village located where the Quesnel River feeds into the Fraser River. It is conceived as 3 pithouses emerging out of the existing Coal Tingley Memorial Park green field forming a village housing a theatre in the round, a Cultural exhibit centre, and a gift store. Outside the village is structural frame of a Pithouse symbolically referencing the historical precedent. Support spaces surrounds the 3 main spaces and a horizontal roof plane connects each structure.

To preserve the nature of the park the planned roof building has access to a roof observation deck allowing visitors a vantage point of the Fraser River. The building merges with the landscape growing out of the site. Each pithouse structure will be crowned with a natural ventilation and slight dip to provide day lighting and natural ventilation to the building interior.

The entrance of the Cultural Centre faces the river front trail and is aligned with Voyager Rock a symbolic reference natural link between the Fraser River and human cultures which exist along its banks. Parking and a drop off area accommodate access to the existing boat launch. Additional parking will be provided across the Frontier Street and at the existing RV drop-off

The existing River Front trail flows through the site and engages a look out plaza with a sculptural pithouse located at the centre. This space is a multi-functional space used for markets and gathering. The Pithouse structure is an initial idea, however this can be replaced by a light structure evocative of a fish drying structure to provide weather protection for kiosks. The building form wraps around this space forming a semi-circular courtyard.

A cafe faces south directed to the plaza where the Quesnel River meets the Fraser. There is easy access from the river path and easy access to the existing picnic area on the lower bench. To enhance the use of the picnic area 12ft diameter concrete pads and picnic tables will be added. A universal washroom provides access to the park, as well as the Cafe.



FORMLINE ARCHITECTURE
 77-604.912.0203 E. info@formline.ca
 www.formline.ca

CITY OF Quesnel

QUESNEL INDIGENOUS CULTURAL CENTRE
 PRE-DESIGN STUDY

All drawings and documents are the property of Formline Architecture. No part of this work may be reproduced, stored in a retrieval system, or transmitted in any form or by any means, electronic, mechanical, photocopying, recording, or by any information storage and retrieval system, without the prior written permission of Formline Architecture. All rights reserved.

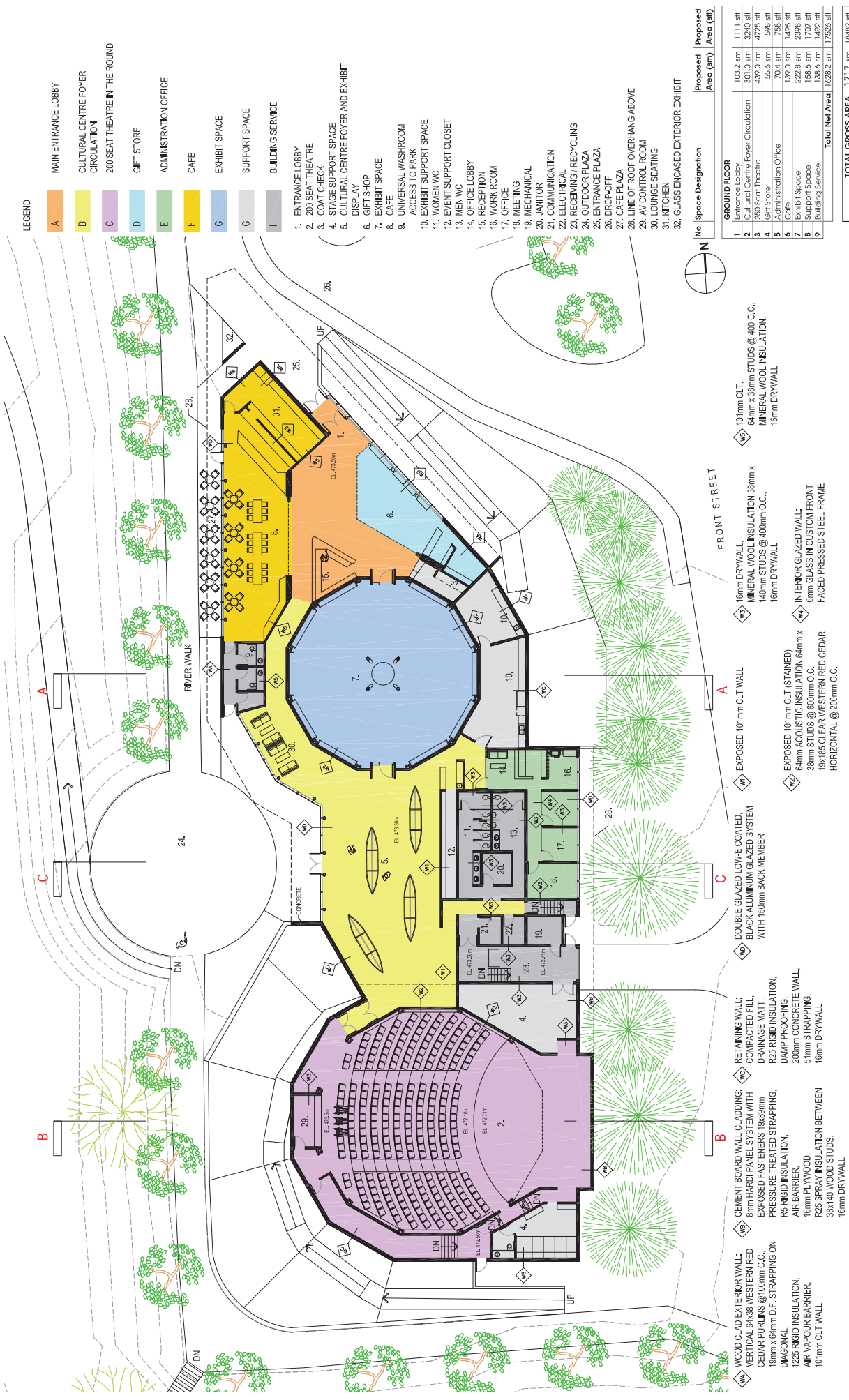
project code: 18001
 drawn: MK
 checked: AW

status: DRAFT
 scale: NTS

date: 2018.12.13
 revision: P02b

DESIGN CONCEPT

drawing number: P02b
 revision:



LEGEND

- MAIN ENTRANCE LOBBY
- CULTURAL CENTRE FOYER CIRCULATION
- 200 SEAT THEATRE IN THE ROUND
- GIFT STORE
- ADMINISTRATION OFFICE
- CAFE
- EXHIBIT SPACE
- SUPPORT SPACE
- BUILDING SERVICE

1. ENTRANCE LOBBY
2. 200 SEAT THEATRE
3. COAT CHECK
4. STAGE SUPPORT SPACE
5. CULTURAL CENTRE FOYER AND EXHIBIT DISPLAY
6. GIFT SHOP
7. EXHIBIT SPACE
8. CAFE
9. UNIVERSAL WASHROOM
10. ACCESS TO PARK
11. EXHIBIT SUPPORT SPACE
12. WOMEN WC
13. EVENT SUPPORT CLOSET
14. MEN WC
15. OFFICE LOBBY
16. RECEPTION
17. WORK ROOM
18. OFFICE
19. MEETING
20. JANITOR
21. MECHANICAL
22. COMMUNICATION
23. ELECTRICAL
24. RECEIVING / RECYCLING
25. OUTDOOR PLAZA
26. ENTRANCE PLAZA
27. DROP-OFF
28. CAFE PLAZA
29. LINE OF ROOF OVERHANG ABOVE
30. AV CONTROL ROOM
31. LOUNGE SEATING
32. KITCHEN
32. GLASS ENCASED EXTERIOR EXHIBIT

No.	Space Designation	Proposed Area (sqm)	Proposed Area (sqft)
GROUND FLOOR			
1	Entrance Lobby	103.2 sqm	1111 sqft
2	Cultural Centre Foyer Circulation	301.0 sqm	3256 sqft
3	Gift Store	45.6 sqm	491 sqft
4	Gift Store	45.6 sqm	491 sqft
5	Administration Office	70.4 sqm	759 sqft
6	Cafe	139.0 sqm	1496 sqft
7	Exhibit Space	222.8 sqm	2398 sqft
8	Support Space	158.6 sqm	1707 sqft
9	Building Service	138.6 sqm	1492 sqft
Total Net Area		1629.2 sqm	17526 sqft
TOTAL GROSS AREA		1717.7 sqm	18482 sqft

Drawing number
P04b
revision

FLOOR PLAN
OPTION B
scale
1:300
date
2018.12.17

status
DRAFT
checked
AW

design code
18001
drawn
MK

QUESNEL INDIGENOUS CULTURAL CENTRE
PRE-DESIGN STUDY

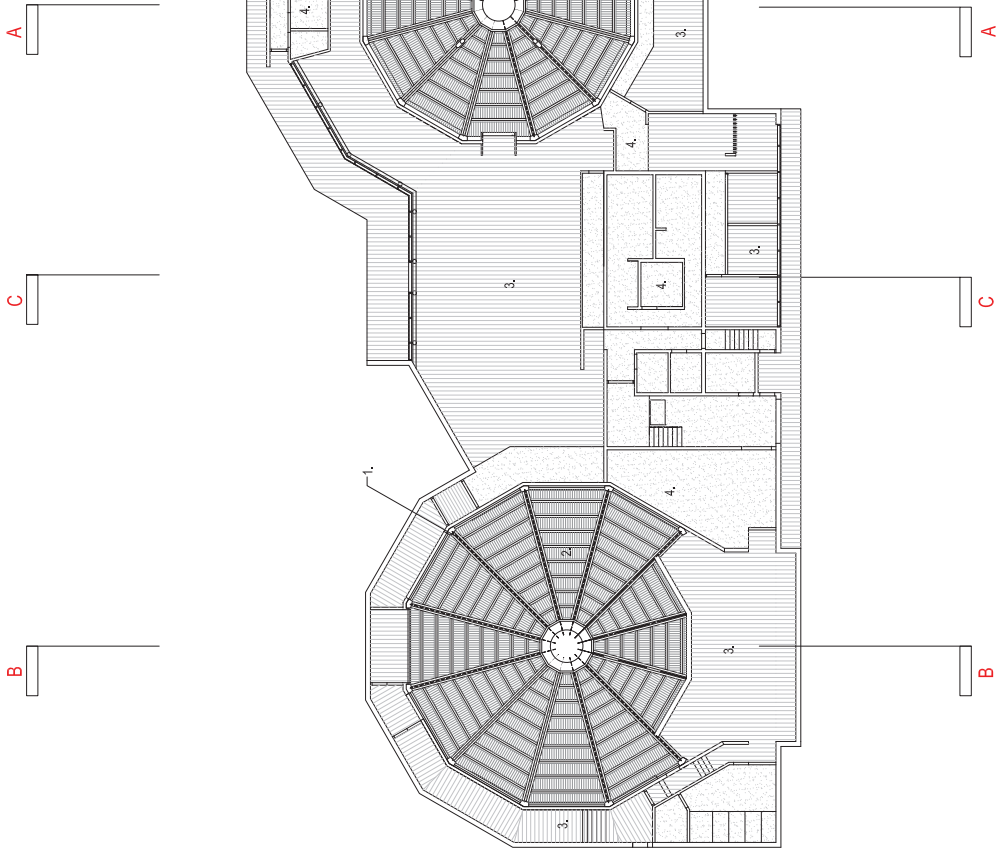
FORMLINE ARCHITECTURE
7-604-912-0203 E: info@formline.ca W: www.formline.ca

CITY OF Quesnel

- W1 WOOD CLAD EXTERIOR WALL: 8mm HARDI PANEL SYSTEM WITH EXPOSED FASTENERS 19x69mm PRESSURE TREATED STRAPPING, R5 RIGID INSULATION, AIR BARRIER, 16mm PLYWOOD, R25 SPRAY INSULATION BETWEEN 38x140 WOOD STUDS, 16mm DRYWALL
- W2 RETAINING WALL: COMPACTED FILL, DRAINAGE MATT, R25 RIGID INSULATION, DAMP PROOFING, 200mm CONCRETE WALL, 51mm STRAPPING, 16mm DRYWALL
- W3 DOUBLE GLAZED LOW-E COATED, BLACK ALUMINUM GLAZED SYSTEM WITH 150mm BACK MEMBER
- W4 EXPOSED 101mm CLT (STAINED) 64mm ACOUSTIC INSULATION 64mm x 38mm STUDS @ 600mm O.C., 19x185 CLEAR WESTERN RED CEDAR HORIZONTAL @ 200mm O.C.
- W5 16mm DRYWALL, MINERAL WOOL INSULATION 38mm x 140mm STUDS @ 400mm O.C., 16mm DRYWALL
- W6 101mm CLT, 64mm x 38mm STUDS @ 400 O.C., MINERAL WOOL INSULATION, 16mm DRYWALL
- W7 INTERIOR GLAZED WALL: 6mm GLASS IN CUSTOM FRONT FACED PRESSED STEEL FRAME

LEGEND

- 1. DOUBLE 456x175 GLULAM BEAMS
- 2. 19mm STAINED CLT PANEL (SLOPED ROOF)
- 3. 260mm STAINED CLT PANEL (FLAT ROOF)
- 4. PAINTED DRYWALL SUSPENDED CEILING BACKED BY STEEL STUD FRAMING



REFLECTED CEILING PLAN

OPTION B
scale 1:300
date 2018.12.17

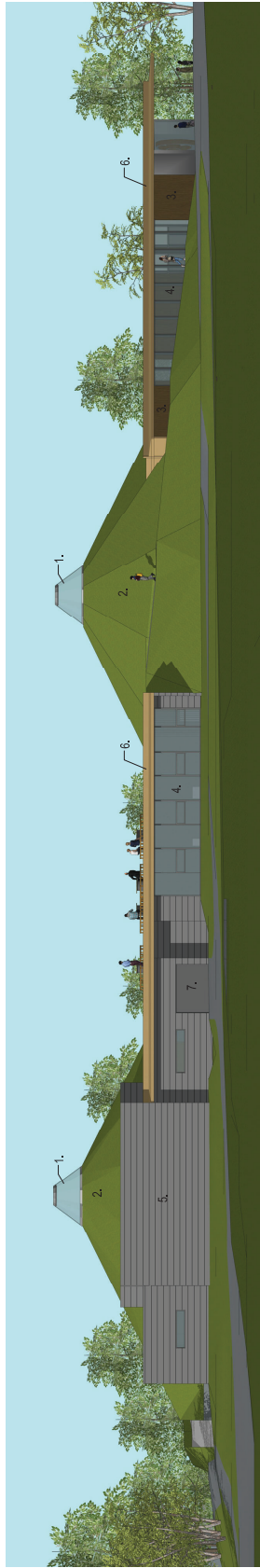
status DRAFT
checked AW
project code 18001
drawn MK

All rights reserved. No part of this document may be reproduced, stored in a retrieval system, or transmitted in any form or by any means, electronic, mechanical, photocopying, recording, or by any information storage and retrieval system, without the prior written permission of the architect. The architect shall not be responsible for any errors or omissions in this document. The architect shall not be responsible for any damage or loss of any kind resulting from the use of this document. The architect shall not be responsible for any delay or interruption of any kind resulting from the use of this document. The architect shall not be responsible for any cost or expense of any kind resulting from the use of this document.

QUESNEL INDIGENOUS CULTURAL CENTRE
PRE-DESIGN STUDY



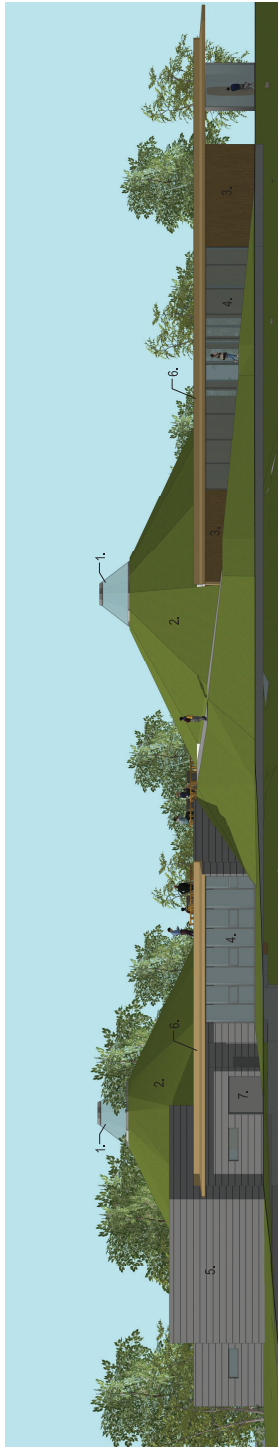
drawing number P05b
revision



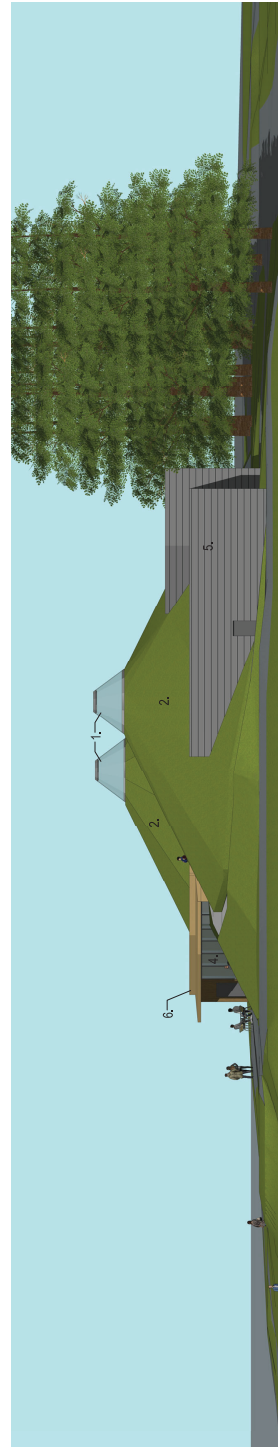
1.ELEVATION EAST



2.ELEVATION WEST



3.ELEVATION NORTH-EAST



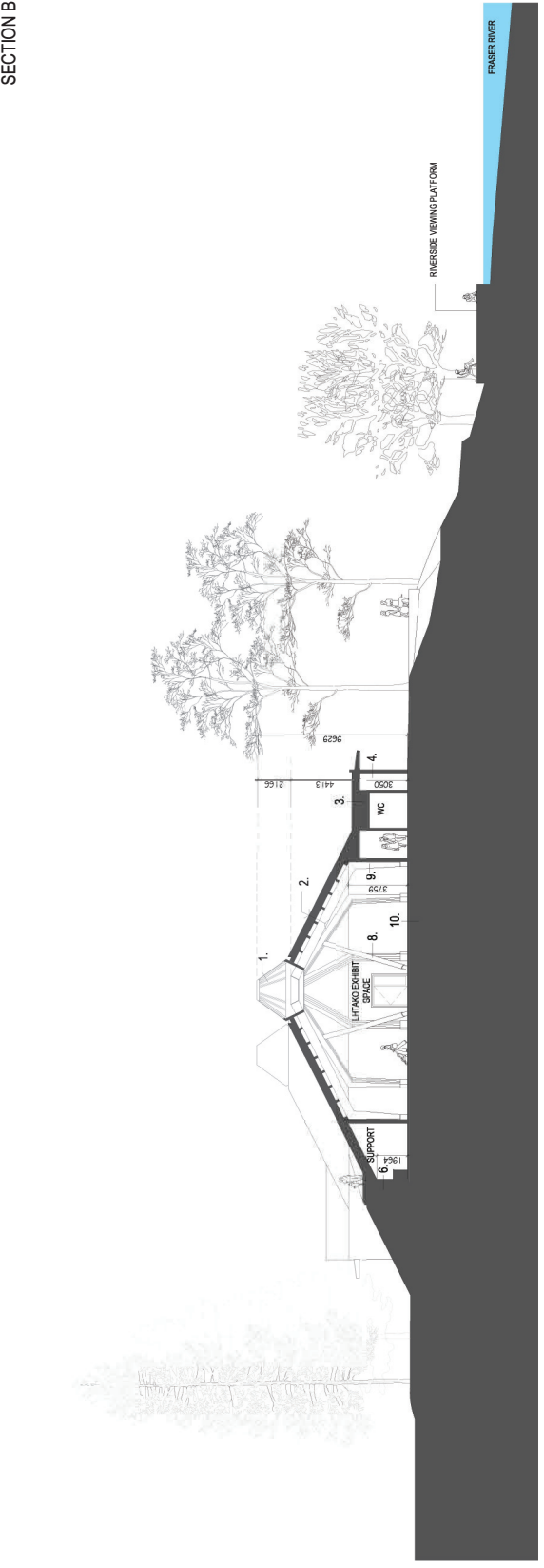
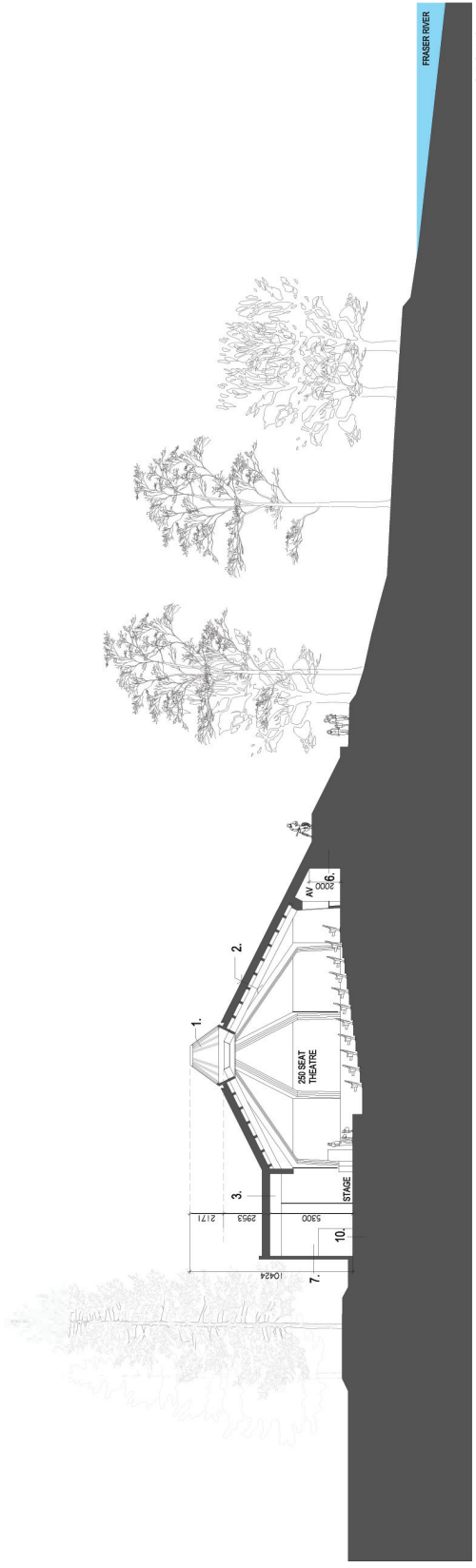
4.ELEVATION SOUTH

- LEGEND
1. DOUBLE GLAZED LOW E COATED SKYLIGHT COMPLETE WITH INTEGRATED VENTILATION VENTS
 2. SLOPED PLANTED ROOF
 3. WOOD CLAD EXTERIOR WALL
 4. DOUBLE GLAZED LOW E COATED GLAZING SYSTEM IN ALUMINIUM CURTAIN WALL
 5. CEMENT BOARD WALL
 6. COPPER ROOF AND PARAPET
 7. ROLLING SHUTTER DOOR

 <p>FORMLINE ARCHITECTURE 111-604-912-0203 E. info@formline.ca www.formline.ca</p>	 <p>CITY OF QUESNEL PRE-DESIGN STUDY</p>	<p>QUESNEL INDIGENOUS CULTURAL CENTRE</p>	<p>status: DRAFT</p>	<p>drawing number: P06b</p>
			<p>checked: AW</p>	<p>revision:</p>
<p>scale: 1:300</p>		<p>date: 2018.12.17</p>	<p>ELEVATIONS OPTION B</p>	

LEGEND

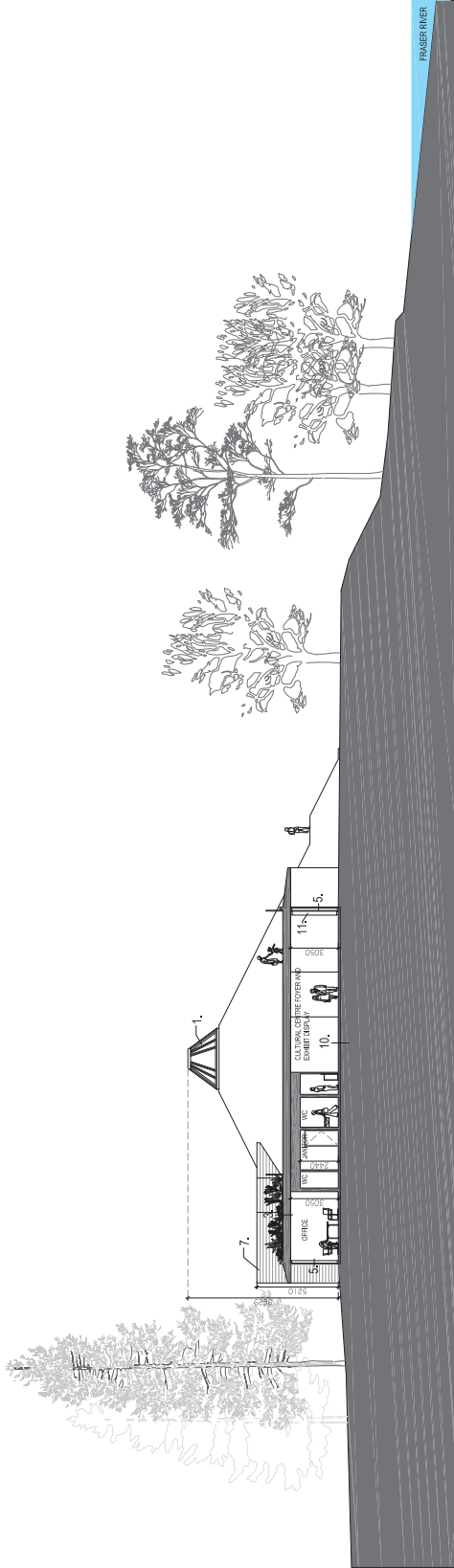
1. DOUBLE GLAZED, LOW E COATED SKYLIGHT COMPLETE WITH INTEGRATED VENTILATION VENTS.
2. SLOPED RANIED ROOF ASSEMBLY: WILD GRASSES, 150mm LIGHT WEIGHT GROWING MEDIUM, PERFORATED TRAY FILTER FABRIC, ROOT BARRIER, DRAINAGE MAT, R20 RIGID INSULATION, 2PLY SBS MEMBRANE, 101mm CLT PANEL, 170 X 250 DOUGLAS FIR PURLINS @ 1000mm O.C., DOUBLE 130 X 300 GLULAM BEAMS.
3. PLANTED FLAT ROOF ASSEMBLY: WILD GRASSES, 150mm LIGHT WEIGHT GROWING MEDIUM, FILTER FABRIC ROOT BARRIER DRAINAGE MAT, R25 RIGID INSULATION, 2PLY SBS MEMBRANE, 260mm CLT PANEL.
4. WOOD CLAD EXTERIOR WALL ASSEMBLY: VERTICAL 64 X 38 WESTERN RED CEDAR PURLINS @ 100mm O.C., 19 X 64mm D.F. STRAPPING ON DIAGONAL, R25 RIGID INSULATION, AIR VAPOUR BARRIER, 101mm CLT WALL Panel.
5. TYPICAL GLAZED WALL SYSTEM: DOUBLE GLAZED, LOW E COATED GLAZING SYSTEM IN ALUMINUM CURTAIN WALL SYSTEM WITH 100mm BACK MEMBER, VERTICAL SILICON JOINTS.
6. SUBTERRANEAN WALL SYSTEM: COMPACTED FILL, DRAINAGE MAT, R 25 RIGID INSULATION, DAMP PROOFING, 200mm CONCRETE WALL, 51mm STRAPPING, 16mm DRYWALL.
7. CEMENT BOARD WALL SYSTEM: 8mm HARD PANEL, SYSTEM WITH EXPOSED FASTENERS, 19 X 89 PRESSURE TREATED STRAPPING, R5 RIGID INSULATION, AIR BARRIER, 16mm PLYWOOD, R25 SPRAY INSULATION BETWEEN 38 X 140 WOOD STUDS, 16mm DRYWALL.
8. 300mm DIAMETER TURNED DOUGLAS FIR COLUMNS.
9. TAPERED 130 X 350 DOUBLE GLULAM COLUMNS.
10. 125mm FLOOR SLAB ON GRADE WITH RADIANT HEATING, 10mil VAPOUR BARRIER, R20 RIGID INSULATION.
11. 250mm DIAMETER DOUGLAS FIR COLUMN



 <p>FORMLINE ARCHITECTURE 1100 West Broadway, Suite 200 V6H 4G6, Vancouver, BC T: 604.912.0203 E: info@formline.ca W: www.formline.ca</p>	 <p>CITY OF Quesnel</p>	<p>QUESNEL INDIGENOUS CULTURAL CENTRE PRE-DESIGN STUDY</p>		<p>project code: 18001 drawn: MK checked: AW</p>	<p>scale: 1:300 date: 2018.12.17</p>	<p>SECTIONS OPTION B</p>	<p>status: DRAFT checked: AW</p>	<p>drawing number: P07b revision:</p>
		<p>All drawings are the property of Formline Architecture. No part of this drawing may be reproduced, stored in a retrieval system, or transmitted in any form or by any means, electronic, mechanical, photocopying, recording, or by any information storage and retrieval system, without the prior written permission of Formline Architecture. Formline Architecture is not responsible for any errors or omissions in this drawing. Formline Architecture is not responsible for any damage or injury resulting from the use of this drawing.</p>						

LEGEND

1. DOUBLE GLAZED LOW E COATED SKYLIGHT COMPLETE WITH INTEGRATED VENTILATION VENTS.
2. SLOPED PLANTED ROOF ASSEMBLY: WILD GRASSES, 150mm LIGHT WEIGHT GROWING MEDIUM, PERFORATED TRAY, FILTER FABRIC, ROOT BARRIER, DRAINAGE MAT, R20 RIGID INSULATION, 2PLY SBS MEMBRANE, 101mm CLT PANEL, 170 X 250 DOUGLAS FIR PURLINS @ 1000mm O.C., DOUBLE 130 X 300 GLULAM BEAMS.
3. PLANTED FLAT ROOF ASSEMBLY: WILD GRASSES, 150mm LIGHT WEIGHT GROWING MEDIUM, FILTER FABRIC ROOT BARRIER DRAINAGE MAT, R25 RIGID INSULATION, 2PLY SBS MEMBRANE, 260mm CLT PANEL.
4. WOOD CLAD EXTERIOR WALL ASSEMBLY: VERTICAL 64 X 38 WESTERN RED CEDAR PURLINS @ 100mm O.C., 19 X 64mm D.F. STRAPPING ON DIAGONAL, R25 RIGID INSULATION, AIR VAPOUR BARRIER, 101mm CLT WALL Panel.
5. TYPICAL GLAZED WALL SYSTEM: DOUBLE GLAZED LOW E COATED GLAZING SYSTEM IN ALUMINUM CURTAIN WALL SYSTEM WITH 100mm BACK MEMBER, VERTICAL SILICON JOINTS.
6. SUBTERRANEAN WALL SYSTEM: COMPACTED FILL, DRAINAGE MAT, R25 RIGID INSULATION, DAMP PROOFING, 200mm CONCRETE WALL, 51mm STRAPPING, 16mm DRYWALL.
7. GEMENT BOARD WALL SYSTEM: 8mm HARDI PANEL SYSTEM WITH EXPOSED FASTENERS, 19 X 80 PRESSURE TREATED STRAPPING, R5 RIGID INSULATION, AIR BARRIER, 16mm PLYWOOD, R25 SPRAY INSULATION BETWEEN 38 X 140 WOOD STUDS, 16mm DRYWALL.
8. 300mm DIAMETER TURNED DOUGLAS FIR COLUMNS.
9. TAPERED 130 X 350 DOUBLE GLULAM COLUMNS.
10. 125mm FLOOR SLAB ON GRADE WITH RADIANT HEATING, 10mm VAPOUR BARRIER, R20 RIGID INSULATION.
11. 250mm DIAMETER DOUGLAS FIR COLUMN



SECTION B

	 <p>QUESNEL INDIGENOUS CULTURAL CENTRE PRE-DESIGN STUDY</p>	<p>status: DRAFT</p> <p>checked: AW</p> <p>drawn: MK</p> <p>project code: 18001</p>	<p>SECTIONS OPTION B</p> <p>scale: 1:300</p> <p>date: 2018.12.17</p>	<p>drawing number: P08b</p> <p>revision</p>
---	---	---	---	--



QUESNEL INDIGENOUS CULTURAL CENTRE
 PRE-DESIGN STUDY

All drawings and/or documents shall be the property of Formline Architecture. They shall not be reproduced, stored in a retrieval system, or transmitted in any form or by any means, electronic, mechanical, photocopying, recording, or by any information storage and retrieval system, without the prior written consent of Formline Architecture.

project code
 18001
 drawn
 MK

status
 DRAFT
 checked
 AW

CONCEPT DESIGN
 OPTION B
 scale
 NTS
 date
 2018.12.13

drawing number
P09b
 revision

