



*building communities together*

## **2020 Business Plan Pine Valley Sewer (1772)**

*Peter Hughes, P.Eng.  
Manager of Environmental Services*

***Working in partnership with communities large and small to offer local, sub-regional, and regional services to ensure that the Cariboo Chilcotin is a socially, economically, and environmentally desirable region.***

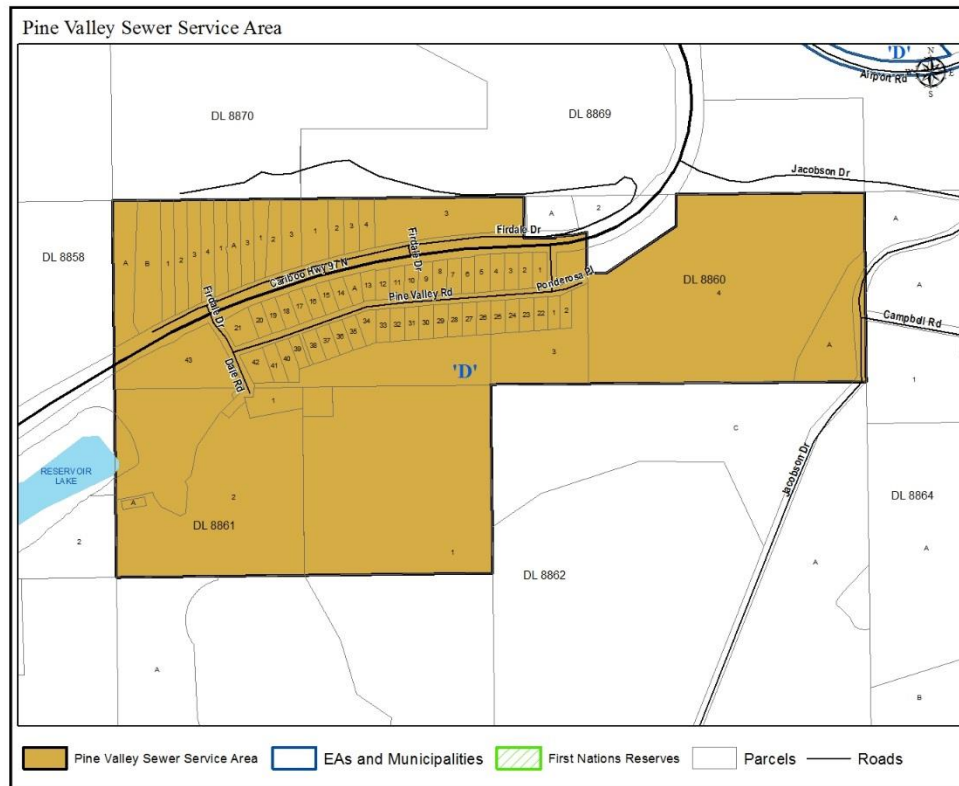
---

### **Department/Function Services**

- The Pine Valley Sewer function was established in 1979 and now services approximately 70 land parcels;
- The system is comprised of two sewage lagoons, a mechanical treatment plant, one lift station and associated sewer piping;
- In 2007, \$280,000 in capital improvements for a new lift station and refurbished treatment plant were completed. In 2015, a backup power generator was added at a cost of \$75,000;
- Regular inspection and maintenance to system components is undertaken to ensure continuous operations.

Operational costs are collected by way of a variable rate user fee, which was raised in 2008 to \$485. Previously, user fees were set at \$388 and had remained unchanged since 1999. Function authority is provided by the Pine Valley Specified Area Sewer Management Bylaw No. 1806.

As Electoral Area D is the only stakeholder, and the *Local Government Act* requires more than one vote, the entire Board is responsible for the governance of this service.



## Business Plan Goals, Rationale & Strategies

1. **Goal:** Investigate infrastructure replacement options.  
**Rationale:** The treatment plant is now 40 years old and consideration should be given to investigating the costs of replacement and/or other options to service the area.  
**Strategy:** Carry out a feasibility level engineering study to identify options and class D cost estimates to be used in future infrastructure grant applications.
2. **Goal:** Re-evaluation of the fees and charges to the City of Williams Lake.  
**Rationale:** The CRD currently has a service agreement with the City of Williams Lake that defines charges for use of the Pine Valley Sewer System to service the Williams Lake Airport. Increased development (Fire Centre) and passenger numbers has resulted in significant flows to the sewer system. The terms and conditions of the agreement should be reviewed to ensure fees and charges are adequate.  
**Strategy:** Determine flow contributions from the Williams Lake Airport and adjust charges accordingly through consultation with City of Williams Lake staff.

## **Overall Financial Impact**

The 2020 requisition remains the same as the 2019 requisition.

The projected capital reserve as of December 2019 is \$33,662. Residential user fees for the system total \$485 per year. Capital reserve contributions are \$2,000 per year in order to build up the reserve fund.

## **Significant Issues & Trends**

WorkSafe BC has a recent mandate targeting municipalities and regional districts focusing on confined space entry plans, policies and procedures as well as general occupational health and safety requirements. In response to inspections by Worksafe, hazard assessments were completed for all utilities owned by the Cariboo Regional District to identify all confined space locations and subsequently procedures were developed for each. In order to strictly meet WorkSafe requirements, some of the procedures recommended cannot be implemented with existing infrastructure layout. Staff are currently investigating how other jurisdictions are approaching these requirements and looking for alternative procedures acceptable to WorkSafe.

The Public Sector Accounting Board now requires local governments to report and record tangible capital assets. At some time in the future local governments may be required to amortize these assets over their useful life.

The Cariboo Regional District is a signatory on the Province of BC/UBCM Climate Action Charter, and has committed to continuing work towards carbon neutrality in respect of corporate operations.

## **Measuring Previous Years Performance**

No significant goals identified in 2019.