



Ministry of
Agriculture, Food
and Fisheries

Agriculture in the Cariboo Regional District

Presentation to the Cariboo Regional District, Committee of the Whole, January 14, 2021
Nicole Pressey, P. Ag., Regional Agrologist, MAFF

Overview

- ▶ Agriculture Land Use Inventories (ALUI)
- ▶ Agriculture Water Demand Models (AWDM)
- ▶ Climate Action Initiative projects
- ▶ Strengths, Weaknesses, Opportunities and Threats
- ▶ RDKS Agriculture Sector Support Plan (2020)
- ▶ RDBN Food and Agriculture Plan (2020)

ALUI and AWDM

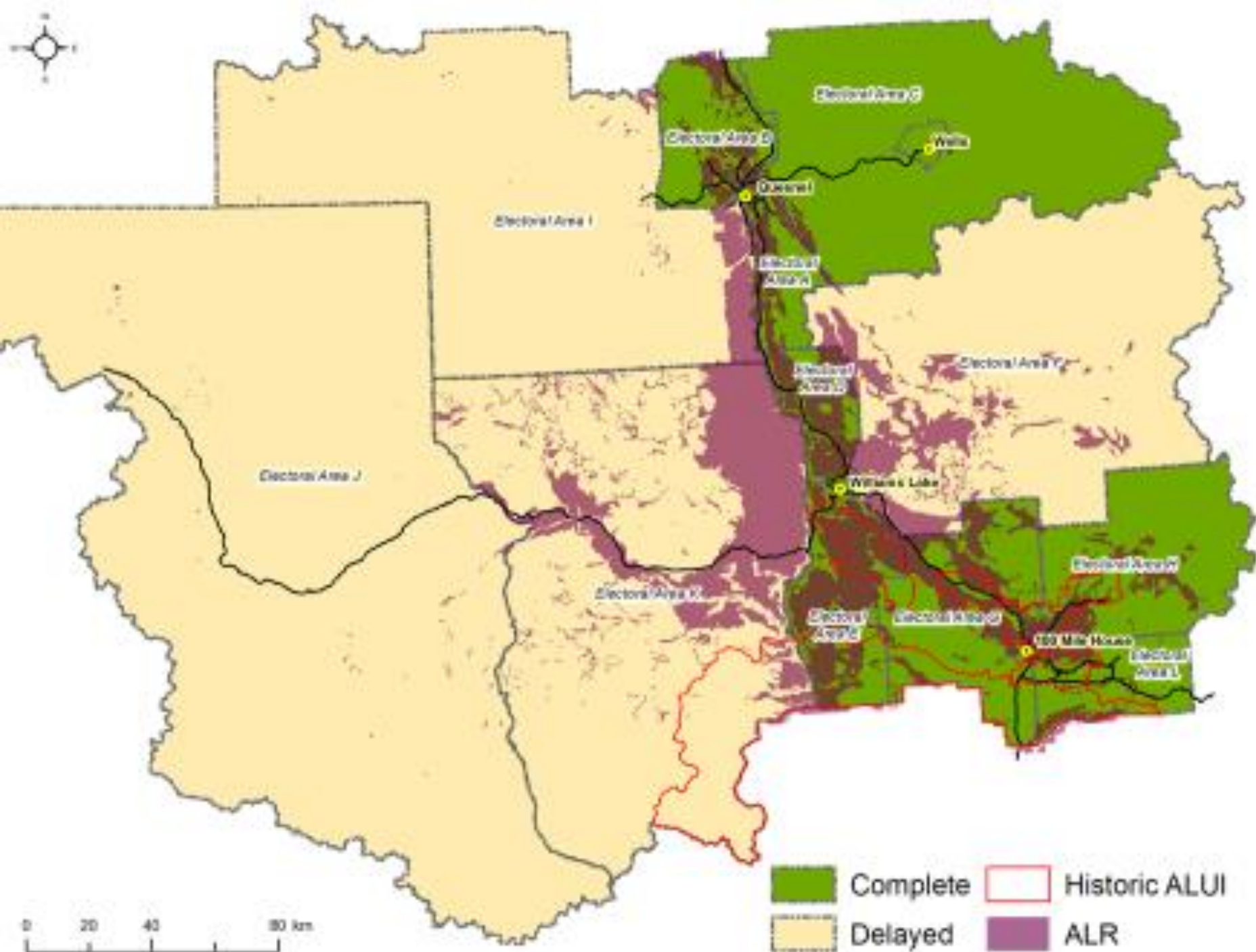
Agricultural Land Use Inventories (ALUI)

- ▶ Describes agricultural land use including crop type, irrigation, livestock, and non-farm uses in the ALR
- ▶ Updates to the CRD ALUIs began in 2018, delayed in 2020 due to COVID
- ▶ Captures trends and informs initiatives (e.g. AWDM and Land Use Planning)

Agricultural Water Demand Model (AWDM)

- ▶ Enables examination of water management alternatives that consider future land use changes
- ▶ Define potential impacts of climate change and identify appropriate adaptation strategies
- ▶ Inform future water storage modelling projects

<https://www2.gov.bc.ca/gov/content/industry/agriculture-seafood/agricultural-land-and-environment/strengthening-farming/planning-for-agriculture/agricultural-land-use-inventories/cariboo-chilcotin-coast>



Full region ALUI initiated 2018

Complete

- Quesnel
 - Williams Lake
 - Wells
 - 100 Mile House
 - Electoral Areas A, B, C, D, E, G, H, L
- ### Delayed
- Electoral Areas F, I, J, K

Historic ALUI

- Chimney Lake 2011
- Lac La Hache 2014
- South Cariboo 2014
- Green Lake 2015

Climate Action Initiatives, Cariboo

2014 *Cariboo Adaptation Strategies* plan

- ▶ **Wildfire Preparedness Resources** workbook and workshops
- ▶ **Ag Significant Dams:** binder and workshops
- ▶ **Livestock Surface Water:** ID and map reduced surface water sites;
- ▶ **Cariboo Agriculture Research Alliance (CARA):** model and launch;
- ▶ **Priority Pests: Scan & Action Plan:** Identified and quantified regional climate change impacts

2018 *Cariboo Adaptation Strategies Update*

- ▶ **CRD, RDBN and RDFFG Fuel Management Business Case for High Risk Interface:** assessment and site selection;
- ▶ **Livestock Surface Water:** a tool for land managers, and water installations; **CARA:** strategic plan and website launch;
- ▶ **Priority Pests:** Pest ID and management tools workshop and resources

<https://www.bcagclimateaction.ca/regional/rap/cariboo/>

Regional SWOT Analysis for Agriculture: Strengths

- ▶ Relative low land cost
- ▶ Indigenous communities are increasingly interested in agriculture
- ▶ Local aggregators are present (e.g. Long Table Grocery)
- ▶ Good access to livestock marketing (e.g. BC Livestock Co-op in Williams Lake)
- ▶ Development of Food Hub (Sprout Kitchen) supports food processing
- ▶ Good infrastructure for beef & forage sectors
- ▶ Established direct-marketing mechanisms (e.g. 5 Farmers Markets)
- ▶ Current programming supports rural economic diversification

Regional SWOT Analysis for Agriculture: Weaknesses

- ▶ Internet/cellular connectivity (being addressed)
- ▶ Land prices are increasing over time
- ▶ Labour (skill and availability)
- ▶ Long distance to certain markets, suppliers, and service providers
- ▶ Future water access is limited (i.e. largely allocated)
- ▶ Long winter season (shorter growing season)
- ▶ Limited processing and abattoir capacity (being addressed)
- ▶ Limited opportunity to capitalize on consumer interest in local food
- ▶ BC's agriculture sector population is aging (BC average age is 56)
- ▶ Challenge to meet new regulatory requirements

Regional SWOT Analysis for Agriculture: Opportunities

- ▶ Younger/new entrants interested in agriculture
- ▶ Indigenous engagement in agriculture is increasing
- ▶ Increased interest in food security
- ▶ Food Hub includes business support and incubator opportunity
- ▶ Marketing options
- ▶ Cariboo Agriculture Research Alliance
- ▶ Technology and Innovation can grow the sector and address challenges
- ▶ Support industries and professionals - Co-op, Highland Irrigation, Feed stores
- ▶ Development of value chains in and outside the region
- ▶ Potential for new crops due to changing growing conditions and market
- ▶ TRU and UNBC are active in the region, and open to partnerships

Regional SWOT Analysis for Agriculture: Threats

- ▶ Increasing non-farm use pressure on agricultural lands
 - ▶ Prices
 - ▶ Adjacent land use conflicts
- ▶ Increased levels of complaints
 - ▶ Rural urban interface (CRD, Ministry and ALC)
 - ▶ Wildlife interactions and impacts
- ▶ Market and climate fluctuations demand business and personal resilience
- ▶ Emergencies - increased frequency and severity of flooding, drought, and wildfires

Recent relevant agriculture plans

Regional District of Kitimat-Stikine (2020)

- ▶ Agriculture Sector Support Plan
 - ▶ Econ Dev Commission can take steps support regional agriculture and food
 - ▶ Planning documents, business development initiatives, voice to lobby governments
- ▶ Producers, processors, emergency planning, food security, more land under production, more agribusinesses, agri-tourism, Indigenous communities and stewardship, agriculture asset map

Regional District of Bulkley Nechako (2020)

- ▶ Update the 2012 Agriculture Plan: baseline data, engage, action plan
- ▶ Develop Food and Agriculture Plan to guide strategic and operational plans, land use and development regulation, and funding and resource requests
- ▶ Vision and action plan for 5-7 years
- ▶ Works closely with partners

Questions or comments?

Nicole.Pressey@gov.bc.ca

Ministry of Agriculture, Food and Fisheries

236-713-2223

AgriService BC 1-888-221-7141

AgriServiceBC@gov.bc.ca

www.gov.bc.ca/agriservice

