



Ministry of
Agriculture, Food
and Fisheries

THE MINISTRY'S STRENGTHENING FARMING PROGRAM

CARIBOO REGIONAL DISTRICT

Committee of the Whole Meeting Presentation – January 14, 2021

Gregory Bartle, Land Use Planner, Strengthening Farming Unit
Business Development Division, MAFF

FOR REVIEW:

- ▶ The Ministry's (MAFF) Strengthening Farming Program;
- ▶ Key program strategies and resources;
- ▶ Agricultural Land Use Inventories (ALUIs);
- ▶ Agricultural Area Plans (AAPs);
- ▶ Roles of Ministry (MAFF) staff.

WHAT IS THE STRENGTHENING FARMING PROGRAM?

- ▶ Its purpose is to ensure that land in the ALR can continue to be farmed.
- ▶ Started in the mid-90s with new legislation;
- ▶ Staff provide technical resource information and work with local governments, farm operators, BC govt staff and the public;
- ▶ Consists of three main Ministry (MAFF) groups:
 - ▶ Regional Agrologists (RAs);
 - ▶ Land use planning staff (LUPs);
 - ▶ GIS specialists.

PROGRAM HISTORY

- ▶ Bill 22 'Right to Farm' (1995) suite of provincial legislation:
 1. *Farm Practices Protection (Right to Farm) Act (FPPA);*
 - Farm Practices Board (now BCFIRB)
 2. *Municipal Act* amendments (now *Local Government Act*);
 3. *Land Titles Act* amendments.

- ▶ Legislation works together with the *Agricultural Land Commission Act (1972)*.

2 MAIN PROGRAM COMPONENTS

1. Farm Practices Protection;
2. Land Use Planning for Agriculture.

3 MAIN THEMES

1. Facilitation and conflict resolution;
2. Land use planning support to local governments;
3. Information and education.

1. FARM PRACTICES PROTECTION – KEY STRATEGIES

- ▶ Provide farm practice informal conflict resolution services;
- ▶ Develop & update the Ministry's Farm Practices in BC Reference Guide;
- ▶ Support BCFIRB where required.

LAND USE PLANNING FOR AGRICULTURE – KEY STRATEGIES

- ▶ Review local government - plans and bylaws;
- ▶ Develop MAFF Minister's - Bylaw Standards (Bylaw Guide);
- ▶ Support local government - Agricultural Advisory Committees (AACs);
- ▶ Develop publications and promote agricultural awareness.

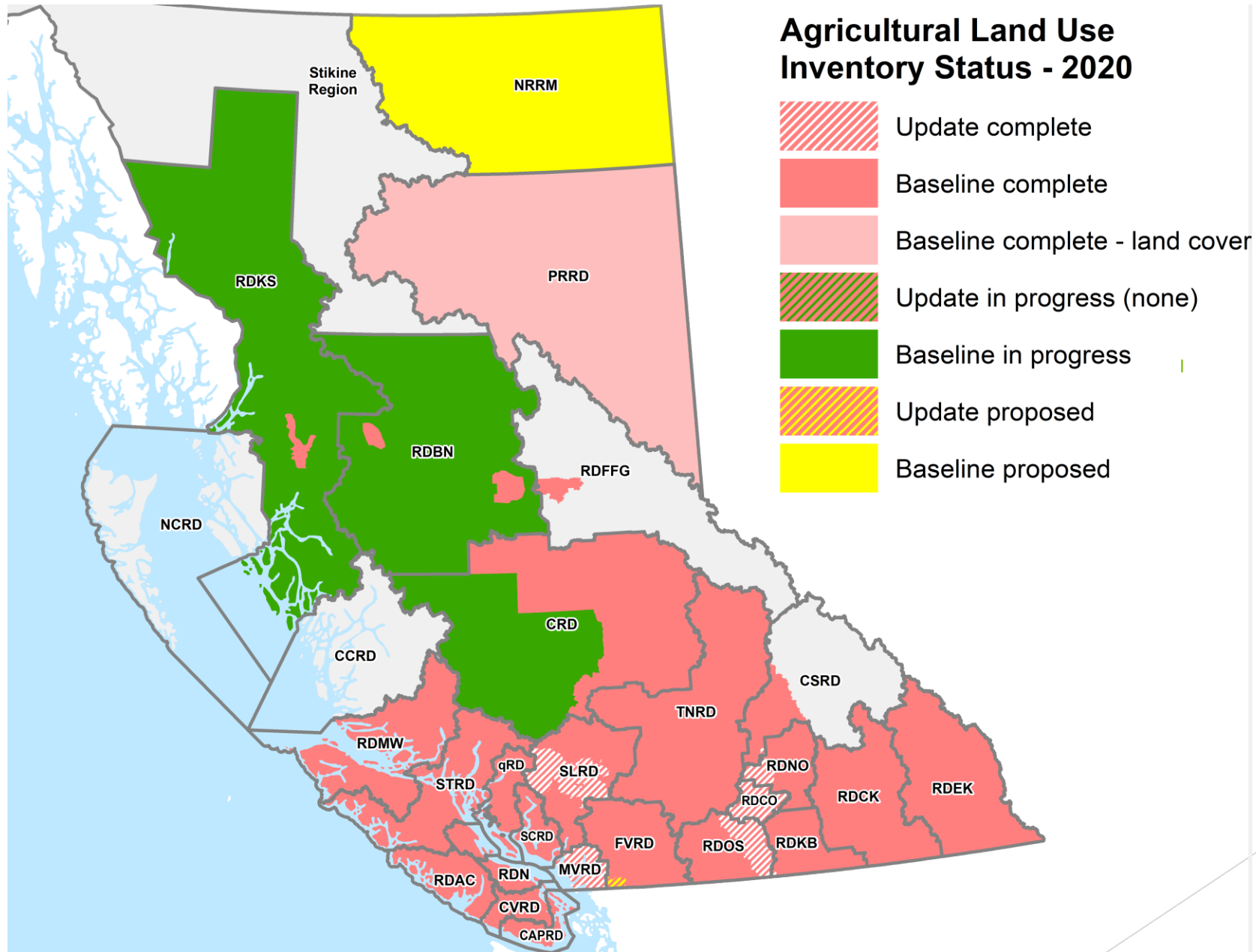
AND

- ▶ *Develop - Agricultural Land Use Inventories (ALUIs);
- ▶ *Resource support for local government - Agricultural Area Plan development.

AGRICULTURAL LAND USE INVENTORIES (ALUIs)

- ▶ ALUIs identify agriculturally related 1) land use and 2) land cover within a defined area;
- ▶ Captures trends and informs initiatives (e.g. AWDM and Land Use Planning)
- ▶ ALUIs are a 'snapshot' in time;
- ▶ ALUIs mainly employ remote sensing and 'windshield' survey gathering techniques;
- ▶ ALUIs generate a data layer of survey info and reporting.

Agricultural Land Use Inventory Status - 2020



AGRICULTURAL AREA PLANS (AAPs)

- ▶ Assist to provide guidance for local government policy and regulation to support agriculture in B.C. communities;
- ▶ Local governments are the lead; MAFF and ALC staff can provide technical advice and support;
- ▶ Approx. 60 are completed across B.C. to date.

YOUR AGRI-TEAM FOR THE CARIBOO

- ▶ **Nicole Pressey, Katie Galiazzo, Marisa Nightingale**, MAFF Agrologists;
- ▶ **Gregory Bartle**, MAFF Land Use Planner;
- ▶ **Corrine Roesler**, MAFF GIS Team Lead;
- ▶ **Sara Huber**, ALC Regional Land Use Planner

A 'partnership approach' is the key for the work done by MAFF's Strengthening Farming Program staff.



Ministry of
Agriculture, Food
and Fisheries

QUESTIONS AND DISCUSSION

Gregory Bartle, Land Use Planner, Strengthening Farming Unit
Business Development Division, MAFF