

- Project Index:**
- 1.1: Propose Road Junction
  - 1.2 Proposed Esler Access Road
  - 2.1 Proposed Connection Road to Existing Pavement
  - 3.1 Loop Road from Soccer to Minor Ball
  - 4.1 Existing Soccer Parking Lot
  - 4.2 Soccer Parking Lot Expansion 1
  - 4.3 Soccer Parking Lot Expansion 2
  - 5.1 Existing Minor Ball Parking Lot
  - 5.2 Minor Ball Parking Lot Expansion
  - 6.1 Existing Slo-Pitch Parking Lot 1
  - 6.2 Proposed Slo-Pitch Parking Lot
  - 6.3 Existing Slo-Pitch Parking Lot 2
  - 6.4 Slo-Pitch Parking Lot Expansion
  - 7.1 Minor Baseball Field Access Road
  - 8.1 Proposed Slo-Pitch Parking Lot Access
  - 8.2 Slo-Pitch Field Access Road

Parking lot expansions will improve efficiency and discourage parking along the side of main roads

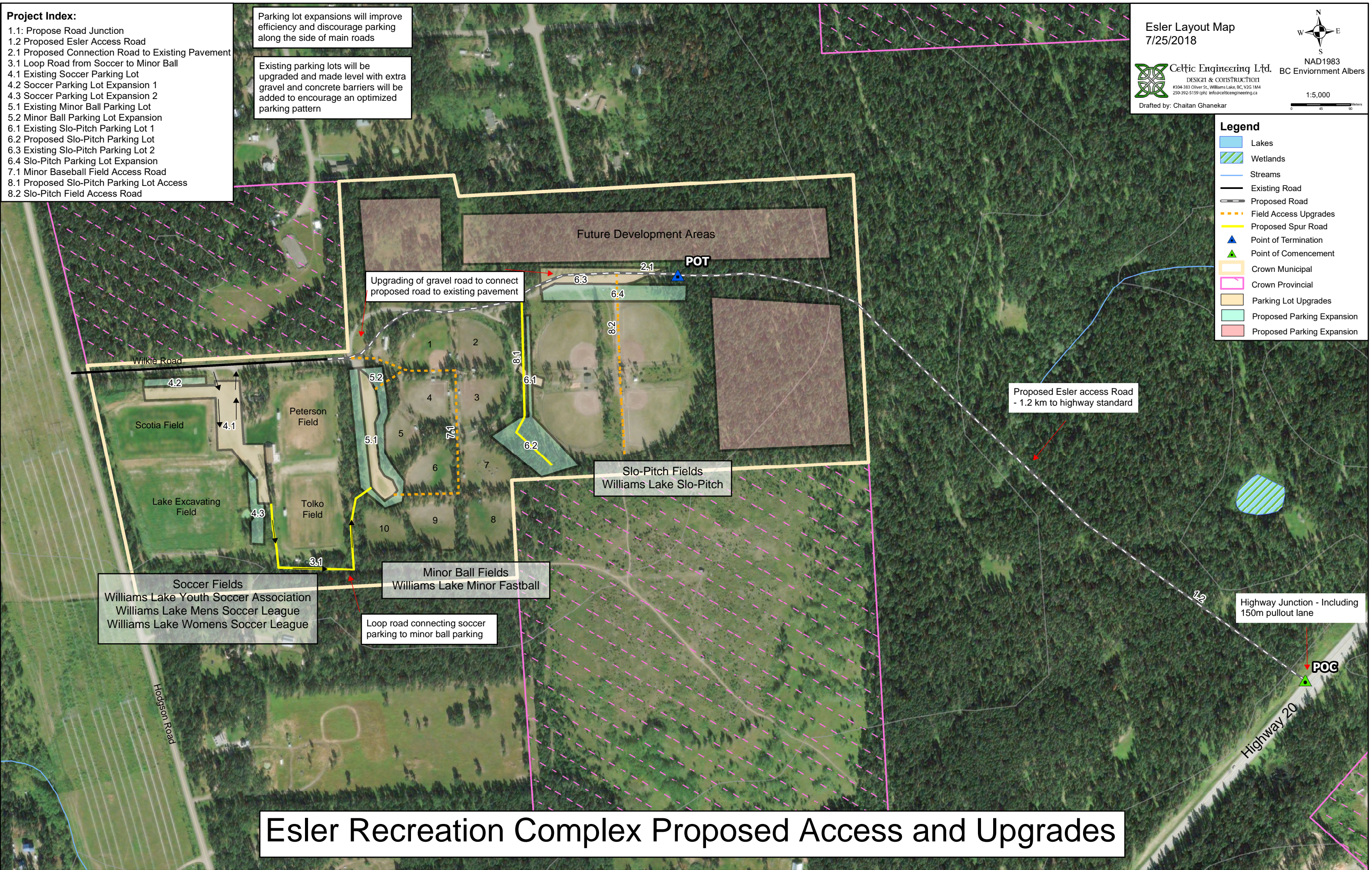
Existing parking lots will be upgraded and made level with extra gravel and concrete barriers will be added to encourage an optimized parking pattern

Esler Layout Map  
7/25/2018

**Celtic Engineering Ltd.**  
DESIGN & CONSTRUCTION  
#304-383 Oliver St., Williams Lake, BC V2G 1M4  
250-392-5159 (ph) info@celticengineering.ca

NAD1983  
BC Environment Albers  
1:5,000

- Legend**
- Lakes
  - Wetlands
  - Streams
  - Existing Road
  - Proposed Road
  - Field Access Upgrades
  - Proposed Spur Road
  - Point of Termination
  - Point of Comencement
  - Crown Municipal
  - Crown Provincial
  - Parking Lot Upgrades
  - Proposed Parking Expansion
  - Proposed Parking Expansion



# Esler Recreation Complex Proposed Access and Upgrades