

**Cariboo Regional District  
Solid Waste Advisory Committee (SWAC) – July 7, 2021 Meeting Minutes**

Present: Al Richmond, Amanda Vibert, Cory Delves, Jared Taylor, Sherri Jonkman, Davee Palmantier, Joanne Dodgridge, Karen Moores, Leslie Glen, Ted Olfert, Tera Grady, Vince Benner

Absent: Dan Harrison, Mary Forbes, Peter Jarvis, Enver Hrbinic, Leonard Cook, Oliver Berger, Pat Mahood, Roxanne Pop, Steve O'Hara, Tyron Harry

Meeting was called to order at 4:34pm.

Agenda:

1. Call to Order
  - a. Adoption of the Agenda
2. Adoption of Minutes
  - a. May 19
  - b. May 27
3. Survey Results to Date
4. Review of Public Meeting Discussions
5. Looking Ahead

**1. Call to Order**

The agenda was adopted, and Vince proposed minutes for approval. Cory made the motion, Al seconded the motion, none opposed, and it was carried.

**2. Adoption of Minutes**

Cory made a motion to adopt the May 19 and May 27 minutes, Vince seconded the motion, none opposed, and it was carried.

**3. Survey Results to Date**

Survey results through June 5 were reviewed per Consultation Updates June 2021 (attachment one). A total of 880 surveys were completed to date; it was noted that this falls short of the 1,000 goal and what was received in 2011. Factors including COVID-19 gathering restrictions and the current wildfires were noted as additional variables.

The surveys completed by resident were reviewed and AC members were encouraged to do a last promotion push to ensure representation across jurisdiction. The survey completion date was extended to July 15 to further optimize the response.

An excerpt of results were provided related to shared ranking and usage frequency (majority ranked very important and important, most use monthly or quarterly), future waste

management services (curbside and depot recycling ranked highest), preferred outreach methods (e.g. social media ranked highest), cost (majority were not sure of solid waste charges), and user pay support (no and 'need more information' ranked highest).

#### **4. Review of Public Meeting Discussions**

Six interactive virtual one-hour meetings were conducted in June 2021. On June 8, 16 and 24 a Noon session as well as an end of day session took place (4:30pm, 7:00pm and 5:00pm respectively). A total of 64 residents and stakeholders enrolled and there were 44 participants total – including some who attended more than one session. A total of 36 participants attended sessions representing 24 CRD residents and 12 AC members.

The presentation was designed to provide an overview of the current solid waste management system and foster discussion around what future services are of interest and how diversion can be increased in the Cariboo. See June Public Meetings Final 2 (attachment two) for the full presentation. Sheila Molloy, the Coast Waste Management Association Executive Director, served as facilitator; it was agreed she set the meeting tone well and added value for the sessions.

The discussion was well informed and covered many primary areas. Recycling and education came up most frequently at 25 and 22 mentions while organics/composting and diversion opportunities had 14 mentions. User pay and illegal dumping were generally referenced together and has a combined result of 11 mentions. Reuse and land-fill related issues were also discussed.

#### **6. Looking ahead**

Once the survey is completed, analysis will take place and a summary will be developed.

The next meeting will occur September 8, 2021 at 4:30pm as the AC Committee delves deeper into a current reality review and develops options for further consideration. An inquiry was made about meeting in person if it fit within the Province's Public Health Order at the time.

There was also interest in further discussing compost options in the north. Vermiculture trials where substrate can be used are underway. Collection continues to be a significant barrier to overcome.

## Consultation Updates June 2021

### By the Numbers – Survey and Community Meeting Results

July 7, 2021

#### Survey

A comprehensive survey was developed to provide a high level overview of the CRD solid waste system (e.g. annual tonnage per capita and cost per resident), assess usage and gauge satisfaction levels for the current solid waste system, determine community values, get initial feedback on future options, and collect demographic information.

The survey was publicized through social media, CRD and muni websites, news releases, posters, and in direct interactions with transfer station attendants and outreach staff. Promotion took place actively starting June 1, with an extra push in the last week of June to ensure representation by community and an overall increase in completed surveys.

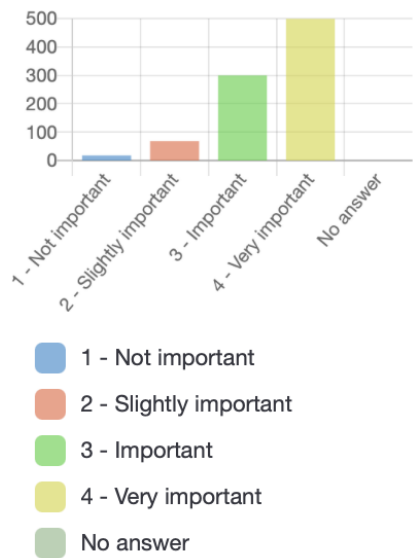
As of Monday June 5, here are the responses in aggregate as well as by community.

Response Type	Total
Surveys completed	880
Residents signed up for raffle	674
Future SWMP consultation information interest	341
Workplace survey interest	173

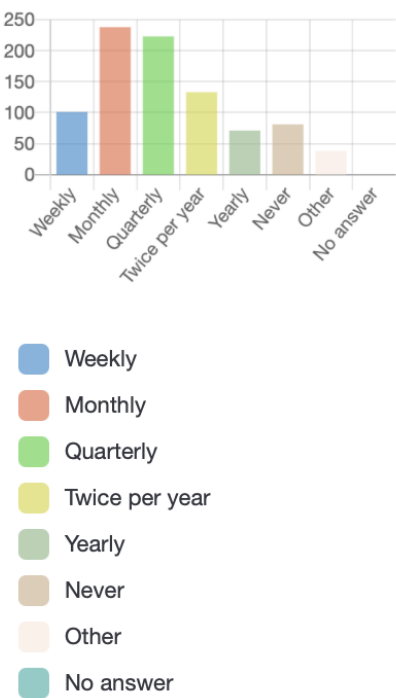
Jurisdiction	Surveys Completed (%)	Surveys Completed	Raffle register	Future SWMP Info Interest	Workplace Survey Interest
City of Williams Lake	14.5%	128	95	43	24
City of Quesnel	12.7%	112	99	34	27
Electoral Area D (Commodore Heights - McLeese Lake)	10.9%	96	75	38	11
Electoral Area A (Red Bluff - Quesnel South)	10.5%	92	70	44	19
Electoral Area E (South Lakeside - Dog Creek)	9.8%	86	65	42	16
Electoral Area G (Lac La Hache - 108 Mile Ranch)	7.2%	63	54	31	14
District of 100 Mile House	6.6%	58	43	21	12
Electoral Area F (Horsefly - Likely - 150 Mile House)	6.0%	53	35	19	13
Electoral Area L (Lone Butte - Interlakes)	5.9%	52	33	17	12
Electoral Area B (Quesnel West - Bouchie Lake)	4.4%	39	30	13	7
Electoral Area H (Canim Lake - Forest Grove)	4.3%	38	25	11	4
District of Wells	2.4%	21	14	9	5
Electoral Area C (Barlow - Barkerville)	2.3%	20	20	12	5
Electoral Area I (Narcosli - Nazko)	1.5%	13	10	3	2
Electoral Area J (West Chilcotin)	0.8%	7	4	3	2
Electoral Area K (East Chilcotin)	0.2%	2	2	1	0
<b>Total Surveys</b>	<b>100.0%</b>	<b>880</b>	<b>674</b>	<b>341</b>	<b>173</b>

SHARESHED

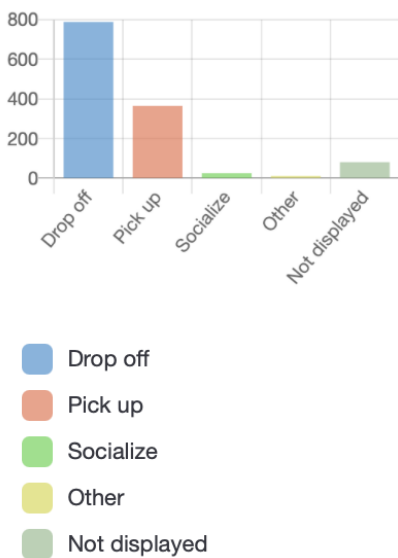
How would you rank the importance of share sheds to reduce, reuse and recycle?



How often do you use share sheds?

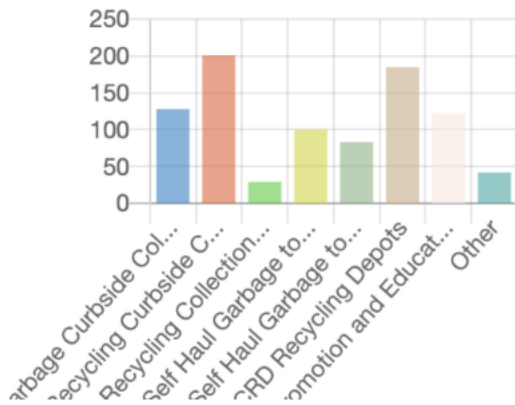


What do you use share sheds for?



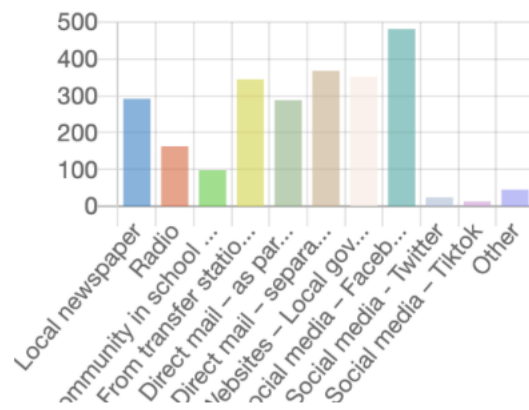
## MANAGEMENT SERVICES and HOW CONTACTED

As applicable, what waste management services would you like to see change and why?  
(write in your answers)



- Garbage Curbside Collection
- Recycling Curbside Collection
- Recycling Collection for Multi-unit Buildings (apartment or condo)
- Self Haul Garbage to Landfill
- Self Haul Garbage to Transfer Station
- CRD Recycling Depots
- Promotion and Education of Solid Waste Services
- Other

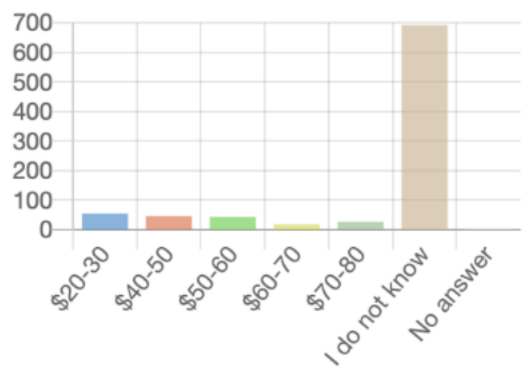
How would you like to be informed about your garbage and recycling services?



- Local newspaper
- Radio
- Community in school programs (i.e. my kids tell me)
- From transfer station or landfill signage or attendant
- Direct mail – as part of other mailings (e.g. utility billing if relevant)
- Direct mail – separate newsletter or flyer
- Websites – Local governments
- Social media – Facebook / Instagram
- Social media - Twitter
- Social media – Tiktok
- Other

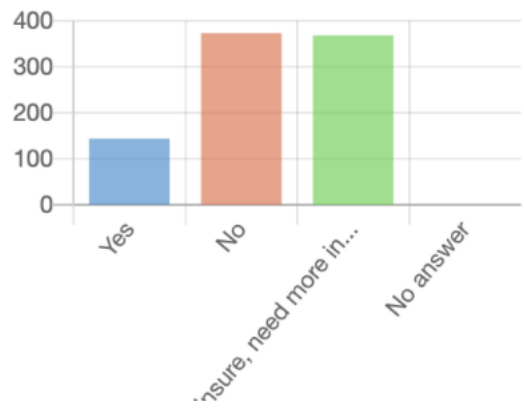
COST and USER PAY

Do you have a sense of how much is charged for solid waste per \$100,000 home value?



- \$20-30
- \$40-50
- \$50-60
- \$60-70
- \$70-80
- I do not know
- No answer

Do you support the use of tipping fees (user pay) as a way to increase waste diversion and recycling?



- Yes
- No
- Unsure, need more information
- No answer

## Public Meetings

Six interactive virtual one hour public meetings took place in June to provide residents with an overview of the region's solid waste management system and get initial input from residents about future priorities:

June 8 – Noon, 4:30pm

June 16 – Noon, 7:00pm

June 24 – Noon, 5:00pm

Participation totals are presented below.

Response Type	Total
Total Enrolled	64
Total # Participants (including those who attended >1 session)	44
Attrition Rate	34.4%
Total # Participants	36
Total # Non AC member Residents	24
Total # AC members	12

The following themes and topics were discussed during the public meetings.

Topic	# Mentions
Recycling	25
Education	22
Organics / composting	14
Diversion opportunities	14
User pay / illegal dumping	11*
Reuse	3
Landfill-related	2

\*When discussed most residents spoke to user pay importance but were also concerned about illegal dumping as part of the transition.

Detailed themes as discussed:

Topic	# Mentions
User pay positive mention	8
User pay concern general	2
Illegal dumping (as user pay impact)	7
Noncontrolled site issues	1
Landfill issues Quesnel - long lines, out of the way	1
Landfill issues and maintenance	1
Diversion - home turnover	2
Diversion - special events	1
Diversion - required commercial recycling and composting	1
Diversion - curbside collection - add more near urban centres	2
Education - Important to understand the system	1
Education - what is accepted / harder to recycle items (kitty litter, weeds)	10
Education - where does recycling go	3
Education - schools	5
Education - interactive behaviour change opportunities	7
Education - cost savings long term to divert	3
Reuse centres - important	1
Reuse - from TS, site attendant support	2
Recycling - more drop offs	1
Recycling - enhance / one stop shop	3
Recycling - mattresses	3
Recycling - textiles	2
Recycling - agricultural products	3
Recycling - wood waste	2
Recycling - paper and packaging	1
EPR - keep producers accountable	1
Food waste prevention - address food insecurity	1
Composting - important generally (diversion from LF, amendment)	3
Compost - curbside collection	3
Compost - animal feed	1
Compost - small scale	2
Compost - home	2
Compost - livestock	1



**CARIBOO REGIONAL DISTRICT**

**Let's Talk Less Trash**  
Public Meeting

Solid Waste Management Plan Update 2021  
June 8, 2021

250-392-3351 or  
1-800-665-1636

cariboord.ca

@CaribooRD  
caribooregion  
CRDEmergencyOperations

Let's talk Less trash  
REDUCE, REUSE, RECYCLE

building communities together

1

**Introduction**

- Tera Grady, Supervisor of Solid Waste Management for the Cariboo Regional District
- Thank you for choosing to spend the next hour with us!

Let's talk Less trash  
REDUCE, REUSE, RECYCLE

2

**Presentation Outline**

- Solid Waste Management Plan Update
- CRD's Current Solid Waste System
- Diversion Drivers
- Discussion and Questions

Our questions for you:  
What future services are you interested in?  
How do you think we can increase diversion in the Cariboo?

3

**Solid Waste Management Plan Update**

Our questions for you:  
What future services are you interested in?  
How do you think we can increase diversion in the Cariboo?

4

**Why Are We "Talking Less Trash"?**

- Plan Updates are required by the province
  - Ministry of Environment and Climate Change Strategy requires Regional Districts to update Solid Waste Management Plans (Plan) every ten years
  - The CRD's current Plan must be updated by the beginning of 2023
- Regional Districts are required to set waste reduction targets and track disposal rates
  - CRD submits annual tracking to the Province
  - Plans are to include waste reduction targets
  - Provincial target is 350 kg/person/year target for the province as a whole

5

**Provincial Guiding Principles**

- REDUCE: reduce by as much as possible the amount or toxicity of material that enters the solid waste stream and also the impact on the environment of producing it in the first place
- REUSE: ensure that materials or products are reused as many times as possible before entering the solid waste stream
- RECYCLE: recycle as much material as possible
- RECOVERY: recover as much material and/or energy from the solid waste stream as possible through the application of technology
- RESIDUALS MANAGEMENT: provide safe and effective residual management, once the solid waste stream has been reduced through the application of technology

- Promoting the first 3 Rs (Reduce, Reuse and Recycle)
- Keep organics and recyclables from disposal in landfills
- Support user-pay systems to provide incentives for waste reduction

The Plan Update will integrate guiding principles while customizing solutions for the Cariboo

6



7

### Why Are We “Talking Less Trash”?

Engagement & Consultation are integral to the Plan Update

- Public Advisory Committee (AC)
  - Recruited to oversee the process
  - Our AC started its crash course in solid waste management in April 2021
  - First task was to help design a public survey
  - The AC will use survey and virtual presentation feedback along with other research to determine which options move forward for feasibility studies
- Community Survey and Virtual Presentations
  - Get feedback from residents to determine user satisfaction of the current system and programs, and ideas for future services/systems
- Second Survey and Public Meetings
  - Cariboo residents will be asked to weigh in on the future options

Cariboo Regional District

8

### The CRD's Current Solid Waste System

Our questions for you:

What future services are you interested in?

How do you think we can increase diversion in the Cariboo?

Cariboo Regional District

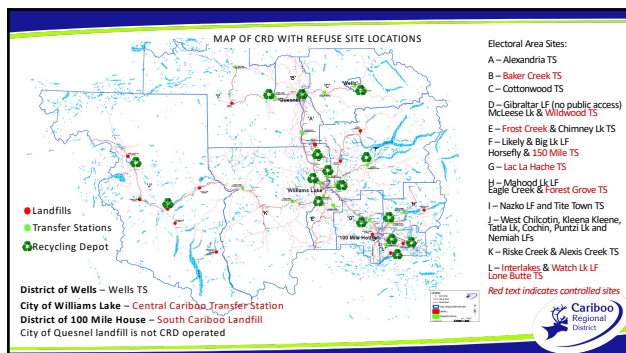
9

### CRD Solid Waste Management

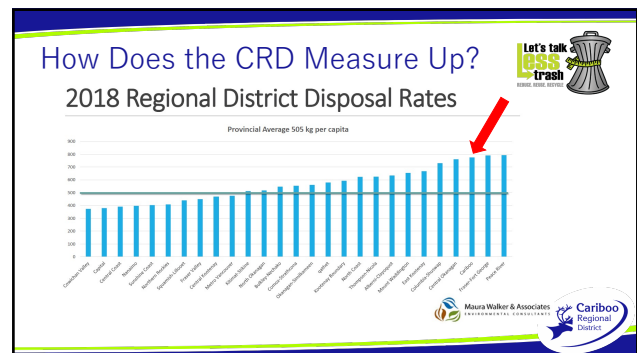
- Solid Waste facilities are spread throughout the 80,000 square km of the CRD
- 32 Sites Total: 14 Landfills and 18 Transfer Stations
  - 12 controlled sites
  - 20 non-controlled sites
- 16 Recycling Depots
- Service over 60,000 residents

Cariboo Regional District

10



11



12

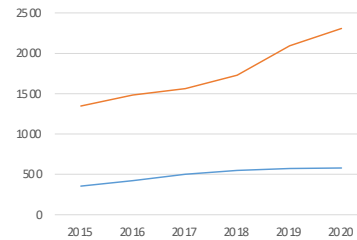
## Why is the CRD's disposal rate higher than other Regional Districts?

- Our residents are spread out
  - Rural and northern Regional Districts have solid waste diversion challenges because of large geographical areas, but relatively small populations (lack the "economies of scale" to invest in diversion)
- Limited curbside collection
  - Majority of residents live in rural areas that do not receive curbside collection
- Recyclables are harder to get to market
  - Commercially generated recyclables are far from the markets and expensive to recycle
- Less oversight at refuse sites and limited ability to charge user fees
  - Lack of controls at refuse sites limits the oversight and education provided to residents
  - Without user fees, there are limited incentives to reduce waste



13

CRD Recycling Tonnes 2015 to 2020



## CRD Diversion Programs: Recycling

Blue line is tonnes from CRD rural transfer stations. Orange line includes municipal curbside tonnes and municipal located depots. Recent increase reflects the addition of the City of Quesnel Depot.

For comparison, the five year average landfill disposal rate is 45,621 tonnes.



14

## CRD Diversion Programs: Recycling



CRD partnered with Recycle BC in 2014 to bring household recycling drop off access to CRD residents



15

## CRD Diversion Programs: Recycling

- Works with Extended Producer Responsibility (EPR) programs:
  - Tire Stewardship BC (TSBC) – used tires of various sizes
  - BC Used Oil Management Association (BCUOMA) – used oil, filters, containers etc...
  - Major Appliance Recycling Roundtable (MARR) – Fridges, Freezers, Washers, Dryers, etc.
  - Call To Recycle – household batteries
  - Electronic Products Recycling Association (EPRA) – anything that plugs in
  - Canadian Electrical Stewardship Association (CESA) – small appliances (microwave)
  - Product Care – used paint and household hazardous waste
- There are 22 EPR programs in BC, for more info visit <https://www.bcrecycles.ca/>



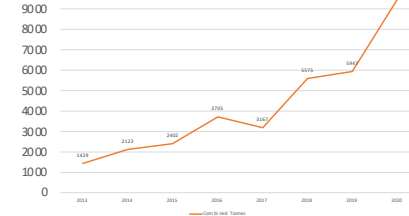
16

## CRD Diversion Programs: Wood Waste



17

CRD Ground Wood Waste (Tonnes)



## CRD Diversion Programs: Wood Waste



18



19



20



21



22



23



24

Cariboo Chilcotin Conservation Society

About Us | **Education** | Community | Get Involved | Contact

### The Waste Wise Program

Waste Wise works within schools and within the community, to educate and show how simple, easy, everyday actions can make a difference in reducing waste.

Williams Lake and Cariboo Regional District 102-27 and 28 schools are eligible for the free in-school presentation. There are hands-on activities for students that include games, waste composting, interactive displays and art projects. Colored food trays to the Food Hall landfill and Cariboo Regional District Recycling facilities are also available. Waste Wise also provides expertise and resources to initiate school-wide composting and gardening.

In the community, Waste Wise messages are shared through radio ads voiced by local school children; community newspaper ads and posting; distribution of educational materials; brochures, booklets; hearing children's artwork; community displays; signage and posters; workshops and presentations; community-empowering projects and participation in community events. Waste Wise is available to assist organizations and businesses plan and host Waste Wise Events.

If you are a teacher, faculty member, or parent, and you are interested in engaging your kids in a Waste Wise activity, contact the Conservation Society for details.

Waste Wise Concepts

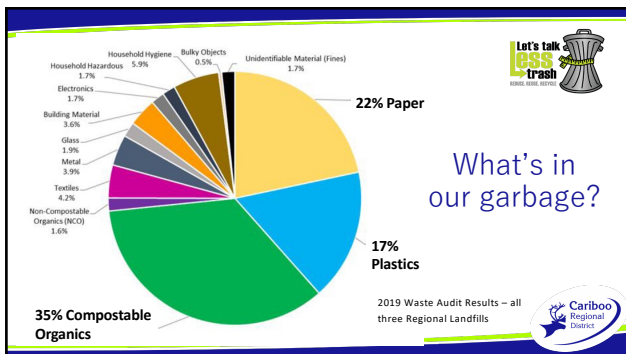
These projects sound fantastic, but they are

## CRD Waste Reduction Education: Waste Wise

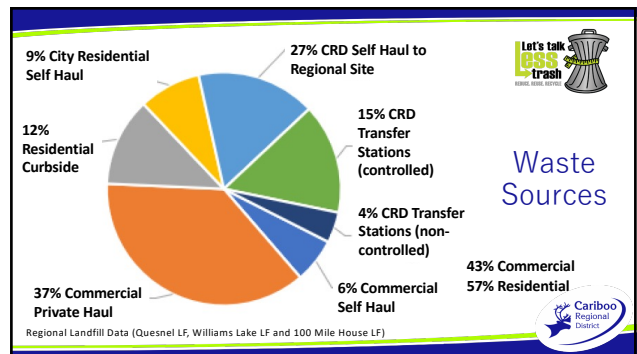
25

## What's still in our garbage?

26



27



28

## Current Funding

The CRD and its member municipalities currently pay for the solid waste services through a combination of:

- Property taxes (municipal and CRD) (78%)
- Commercial and residential tipping fees (17%)
- Grant funding (5%)

29

## Diversion Drivers

Our questions for you:

What future services are you interested in?

How do you think we can increase diversion in the Cariboo?

30



## Keep Organics Out of Landfills



### There are many reasons to consider organics diversion programs

- Reduce Greenhouse Gas Generation
  - When organics break down inside a landfill, they produce methane gas which is 21 times more potent than carbon dioxide as a green house gas
  - The waste sector is responsible for approximately 7.5% of British Columbia's GHG emissions
- Avoid Hauling Heavy Materials
  - Organics are heavy, and transportation of waste is generally paid for by weight
- Complete Nutrient Cycle
  - The nutrients in food waste are lost if they are disposed of in a landfill
  - Creating compost as a valuable soil amendment adds nutrients back into soil, supports water conservation, and improves stormwater management



31

## Keep Organics Out of Landfills



Organics have high moisture content and are responsible for the majority of leachate generated in landfills. Photo of leachate treatment system at CRD's regional LF for Williams Lake and area.



32

## Keep Organics Out of Landfills

If organics are diverted from landfills, the air space they consume are reserved, extending the life of landfills.



Landfill Expansion area at CRD's WL and area regional landfill.



33

## Keep Organics Out of Landfills

Food waste can be diverted for animal feed, keeping it from being wasted

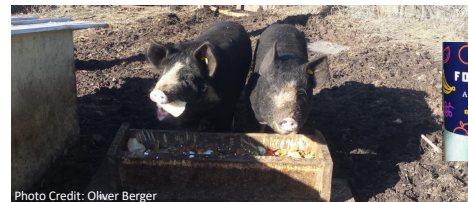


Photo Credit: Oliver Berger

From the Cariboo Chilcotin Conservation Society.



34

## Keep Recyclables Out of Landfills



- Scatter is difficult to contain and costly to clean up.
- Almost all scatter is recyclable.



35

## Keep Recyclables Out of Landfills

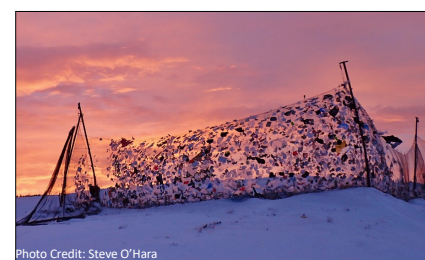


Photo Credit: Steve O'Hara

- Even if scatter is contained, it is still difficult to manage.



36

## Keep Recyclables Out of Landfills



- Reduces Overall Solid Waste Costs
  - As a collector of household recyclables (packaging and paper products) for Recycle BC, the CRD is paid for each kg of recyclables collected.
  - Any recyclables diverted from the landfill eliminates the cost associated with it (\$140/tonne)
- Extends Landfill Life
  - Recyclables are generally light, but they take up more volume than most waste, so the more diverted the more air space that is reserved for future use.
- Keeps Hazardous Products out of the Landfill
  - Many EPR items can be harmful to the environment if not diverted (batteries, electronics, used oil, paints, household hazardous wastes, ozone depleting substances in cooling appliances, etc...)



37

## User Pay



The Province recommends Regional Districts consider user pay systems, as they usually result in waste diversion.

- User pay means paying a fee for waste disposal
- Is a way to inform residents of solid waste costs
- Partially finances the solid waste system
- Incentive to decrease waste generation
- “polluter pay” if you produce a lot of waste, you pay more



38

## Discussion and Questions



Our questions for you:

*What future services  
are you interested in?*

*How do you think we  
can increase diversion  
in the Cariboo?*



39

## Next Steps



- Take the survey and learn more about the Plan Update at [cariboord.ca/en/home-and-property/talk-less-trash.aspx](http://cariboord.ca/en/home-and-property/talk-less-trash.aspx)
- Spread the word, motivate your friends to sign up and join a June virtual presentation
- Participate in the second round of consultation re options
  - Survey and public meetings



40