



*building communities together*

## **2023 Business Plan Gateway Water (1881)**

*Peter Hughes  
Manager of Environmental Services*

***Working in partnership with communities large and small to offer local, sub-regional and regional services to ensure that the Cariboo Chilcotin is a socially, economically and environmentally desirable region.***

---

### **Department Services**

- The Cariboo Regional District (CRD) owns and operates the Gateway Community Water System.

### **Background Information**

- The Gateway water function was established in 2014 and now services 27 land parcels.
- The system is comprised of one well, a pumphouse, associated pumps, water treatment and distribution piping.
- The system meets domestic needs only and does not provide water for community fire protection.

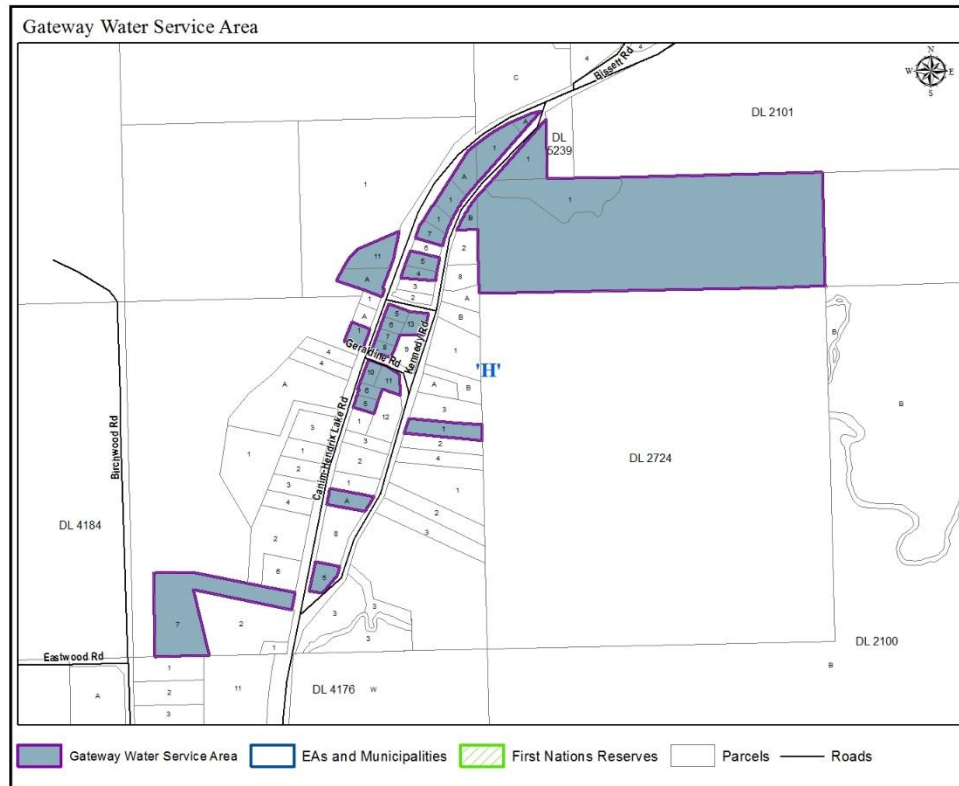
### **Operations**

The water quantity and quality is tested on a regular basis and adjustments to the system are made as required. Regular inspection and maintenance to the system components is undertaken to ensure continuous operations. Connection changes, such as a new connection, are provided to residents as requested.

Operational costs are collected by way of a user fee set at \$477. Taxation is collected by way of a parcel tax of \$530. The Gateway Water System Specified Area Establishment and Loan Authorization Bylaw No. 4892, provides function authority.

The water system was constructed in 2014 at a cost of \$701,725.

As Electoral Area H is the only stakeholder, and the *Local Government Act* requires more than one vote, the entire Board is responsible for the governance of this service.



### Significant Issues & Trends

WorkSafe BC has a recent mandate targeting municipalities and regional districts focusing on confined space entry plans, policies, and procedures as well as general occupational health and safety requirements. In response to inspections by WorkSafe, hazard assessments were completed for all utilities owned by the Cariboo Regional District to identify all confined space locations and subsequently procedures were developed for each.

The Interior Health Authority has been conducting inspections of CRD water systems and making recommendations to achieve compliance with the Drinking Water Protection Act and Regulation. Recommendations for the Gateway system are:

- 1) Increased monitoring frequency
- 2) Iron/manganese treatment
- 3) Residual chlorine monitoring

Further, Health Canada has recently introduced a new Maximum Allowable Concentration (MAC) of 0.12 mg/L for manganese. The water quantity and quality will continue to be tested on a regular basis and adjustments will be made to the system as required.

The Public Sector Accounting Board now requires local governments to report and record tangible capital assets. At some time in the future local governments may be required to amortize these assets over their useful life.

The Cariboo Regional District is a signatory on the Province of BC/UBCM Climate Action Charter and has committed to continuing work towards carbon neutrality in respect of corporate operations.

### **Business Plan Goals, Objectives & Strategies**

- 1. Goal:** Upgrade SCADA.  
**Rationale:** Improve work productivity.  
**Strategy:** Upgrade (SCADA) Supervisory Control and Data Acquisition.

- 2. Goal:** Add Chlorination to Treatment System.  
**Rationale:** Increase Water Quality.  
**Strategy:** Add chlorination inside the existing pumphouse.

**Goal:** Investigate costs for future manganese/iron treatment and residual chlorine monitoring.

**Rationale:** Assessment required to investigate treatment technology and costs to meet new Maximum Allowable Concentration for manganese.

**Strategy:** Retain consultant to investigate treatment options and prepare Class D estimates for use in future infrastructure grant applications.

### **Financial Impact**

The projected capital reserve as of December 2022 is \$29,357.

Taxation is collected by way of a parcel tax of \$530 per year and has remained unchanged since 2015.

The current residential user fee is \$477 per year and will need to increase to \$494 per year in 2023 to meet the growing needs of the system and inflation.