

**SUBDIVISION PLAN OF PART OF DISTRICT LOT 31, LILLOOET DISTRICT, EXCEPT:**

1) PLANS 4942, 5655, 5741, 6244, 8066, 8929, 8930, 9073, 12075, 12121, 12133, 13469, 14034, 14723, 14957, 15355, 15348, 15362, 16094, 16632, 17025, 17172, 19232, 19513, 22429, 23478, 29292, 30110, 35099, KAP48552, H949, KAP53431, H889, KAP56863, H123, KAP58727, KAP63156, KAP63157, KAP67293, KAP78962 AND KAP91096

2) PARCEL A (DD 183432F) AND DISTRICT LOT 2139, LILLOOET DISTRICT, EXCEPT: PLANS 20083, 22474 22604, 25848, 27418, 30110, 32659, 36379, KAP88576, H949 AND KAP91096

PLAN EPP9054

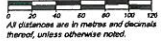
BCGS MAP SHEET 92P.064

**LEGEND**

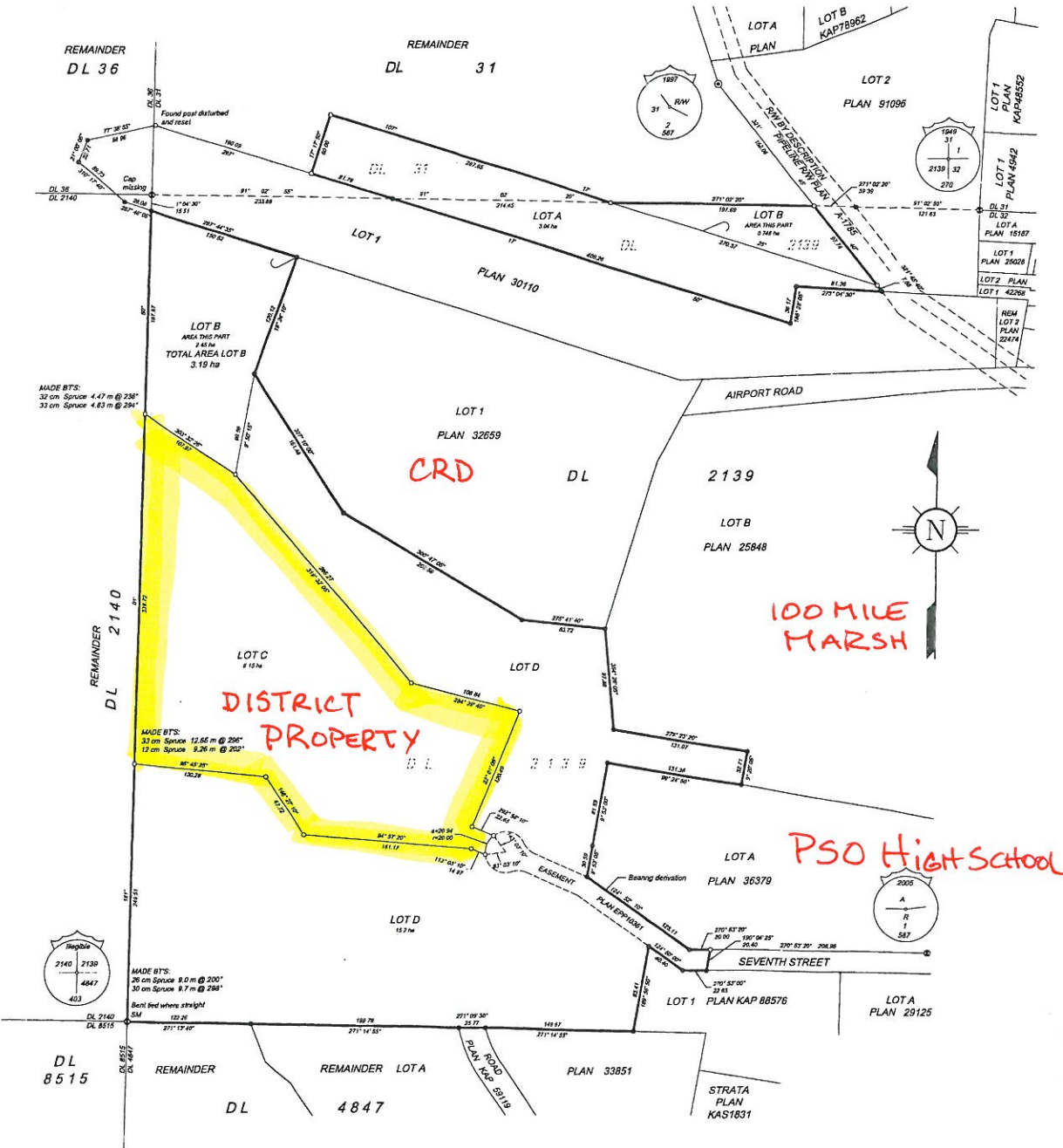
Bearings are astronomic and derived from Plan 35379.

- ⊙ denotes standard post in concrete found
- ⊙ denotes standard capped post found
- ⊙ denotes standard iron post found
- ⊙ denotes standard iron post placed
- BT denotes bearing tree
- BT denotes magnetic
- ha denotes hectares
- s denotes arc distance
- r denotes radial distance
- SM denotes stone mound

The plan shows horizontal ground-level distances unless otherwise noted.



The intended plot size of this plan is 560mm in width by 865mm in height (D Size) when plotted at a scale of 1:2000



This plan lies within the Cariboo Regional District

Covenants in the name of the District Municipality of 100 Mile House pursuant to Section 219 are conditions of approval for subdivision.

Lot A and Lot B are approved with access by air only  
Lot C is approved with access by Easement

This plan lies within the jurisdiction of the Approving Officer for the District Municipality of 100 Mile House.

CARIBOO GEOGRAPHIC SYSTEMS PO BOX 1020, 100 MILE HOUSE B.C. PHONE NO 250-366-4377			
FILE NUMBER	DATE	DRAWING NUMBER	
1001	2010/05/02	010	
DRAFTER: GISEL HEINRICH/W.A.P. 3001			

The field survey represented by this plan was completed by Nigel Henningway, BCLS on the 2nd day of May 2010.