



DISTRICT OF
100 Mile House

Skatepark Design / Build Services



NEWLINE
SKATEPARKS

March 2024

#1 - 20177 97 AVE, LANGLEY BC, V1M 4B9 | T 1.866.463.9546 F 604.530.1119
WWW.NEWLINEKATEPARKS.COM | INFO@NEWLINEKATEPARKS.COM

COMPANY **PROFILE**



COMPANY PROFILE

About Us...

New Line Skateparks is Canada's premier municipal skatepark development firm. With over 450 highly recognized projects around the world, we are proud to serve as the Nation's longest running and most experienced concrete youth park design-build team.

Our staff is comprised of registered landscape architects, engineers, planning experts, and construction professionals who are passionate active skateboarders, BMX riders and mountain bike enthusiasts. This passion inspires us to deliver cutting edge designs and authentic finished environments that create a meaningful connection between youth and the communities in which they live.

We love what we do. When we engage a community in the development process we bring a professional, organized and fun attitude. The design journey is important and our approach is inclusive. We spare no resource to ensure youth and affected stakeholders truly become part of each project solution.



"The Plaza at the Forks is proving to be one of the top skateboard facilities known to man. This project had the right decisions made from top to bottom: siting, budget, design and construction."
Chad Balcom, SPS Regional Director

Skaters for Public Skateparks
Public Space Award



What We Believe...

New Line Skateparks is committed to the improvement of natural and built environments for all generations. Our goal is to promote environmental quality as a way to protect what we value in our unique region. We carry this philosophy through in wheeled sports plaza development. Through listening, watching and testing ideas, we create youth park solutions that work in harmony with existing environments and ultimately lead to fully integrated places.

Skateparks are changing. The days of the stereotypical 'grey square' have long passed as a new era of concrete facility design responds to far more than purely function. When designed and constructed with strong community input and sensitivity to the surrounding context, skateparks not only become beloved destinations for local youth but celebrated public spaces for all to enjoy!



Plaza at the Forks, Winnipeg, MB

"The quality of the design is demonstrated by the international recognition the Plaza received from the skateboarding community. The Plaza at the Forks sets the bar for other Cities throughout North America which are struggling to respond to similar issues."

CSLA Jury Comments

Canadian Society of Landscape
Architects
National Honour Award



Services... The Art of Shaping Space

Planning - NLS provides planning expertise to municipal governments for action sports networks as well as individual project developments. Through completing the award winning Calgary Skateboarding Amenities Strategy in 2012, as well as Skateboarding/Action Sports Master Plans for Waterloo ON, Lethbridge AB, Arlington TX, and Port Coquitlam BC, we have established a proven, transparent and credible planning process that has been widely recognized as a benchmark for our industry. Whether it be site selection, feasibility studies, fundraising programs, or long term facility development strategies, we strive to offer the best mix of qualified personnel and specialized resources for each unique planning challenge.



Callingwood
Youth Park
Concept Master Plan
Edmonton, AB

Site Selection Boards
Medicine Hat, AB

Public Consultation - NLS provides comprehensive consultation services to facilitate community input in the design of Skateparks and other progressive public spaces. As passionate skateboarders and avid park users ourselves, we know how important participation by youth and other members of the community will be to the long term success of each project. No matter what project size, we deliver a tailored program of hands-on, interactive design workshops and public presentations facilitated by principal members of our team. Outside of our scheduled meetings, youth and other stakeholders are encouraged to continue to submit written comments, sketches, pictures etc. through our specially developed custom web portal for immediate and ongoing feedback. Overall, we believe engaging the community in a meaningful way is one of the most critical aspects of any Skatepark design journey and a key factor to our team's continued success.

1st design workshop - Peachland, BC
Pre-construction community info session - Nanaimo, BC



City-Wide Skateboarding
Amenities Strategy
Calgary, AB

Canadian Society of Landscape
Architects
National Citation



Services... The Art of Shaping Space

Design - NLS designs award winning municipal concrete skateparks, pump tracks and other wheeled sport environments that continually set the bar for international skatepark development. From day one, we have chosen to think outside the 'concrete square' by leading the industry in introducing a site and community-specific design approach, integrated art/sculptural installations, green/sustainable development initiatives, CPTED principles, innovative materials and aesthetic detailing, progressive lighting schemes, skateable donor recognition signage, and architecturally striking skatepark roof structures. We believe that every project and community has a unique 'story' that can be told through authentic and enduring Skatepark architecture. To realize our unique designs, we take great pride in delivering photorealistic 3D facility modeling, animated project 'fly-through' experiences, and certified technical drawings to ensure complete project understanding and a thorough construction process for each park.

Construction - New Line Skateparks is Canada's most experienced provider of large-scale municipal skatepark construction services - serving as the General Contractor on a significant portion of the 450 + designs completed by our team. Whether it be complete turnkey project solutions or specialty services/products, we are recognized as a global leader in the development of site-built concrete skatepark construction technology and techniques. Our team has also worked hard to lead the industry in cost and schedule control, safety, and concrete quality accreditation - with a guarantee of design-build budget certainty, on-time project performance, and ACI (American Concrete Institute) certified team members overseeing all shotcrete operations. Finally, New Line Skateparks has been fully bonded and insured for over 22 years and employs approximately 50 dedicated field staff leading municipal skatepark projects across the world.

American Shotcrete Association
Outstanding Shotcrete Award
Norton Skatepark - Burlington, ON



C Jay Smith Skate Plaza - Newnan, GA



Banff National Park Skatepark - Banff, AB



Chemainus Skatepark - Chemainus, BC



Chinook Winds Youth Park - Airdrie, AB



Vancouver Skate Plaza - CSLA Regional Honour Award ★



Roc City Skate Plaza - Rochester, NY - American Public Works Association Excellence in Design Award ★



Marina Park Skate Plaza - Thunder Bay, ON - Parks and Recreation Ontario Excellence in Design Award ★

Youth Park Design Philosophy....

New Line Skateparks Inc. has worked extensively in the planning, design and construction of concrete skateparks, pump tracks, BMX parks, mountain bike courses and other progressive 'casual recreation' facilities. Although this emerging area of recreation is not new, the participation levels associated with inline, BMX, mountain biking and skateboarding have climbed to exceptional levels over the last 22 years.

Youth Park Design Philosophy...

The inclusion of 'Action Sports' in the planning process benefits the whole community by making children, youth and adults that participate in these activities feel valued. Developing a youth park strategy that includes action sports programs and facilities will introduce new experiences and challenges for a broad demographic that is often difficult to engage and/or overlooked in community parks planning.

Youth Park Design Philosophy...

Developing a successful youth park design requires a consultant to think and act in a way that respects the desires of future park users. This respect must be balanced with an understanding of construction tolerances, safety standards, community needs, security, and budget. NLS has a diverse and qualified staff who consistently seek new ways to achieve the expectations of the target user group while setting realistic goals, limits and deadlines.



TEAM AND
EXPERIENCE

TEAM ORGANIZATION AND PROJECT STAFF

Kyle Dion

New Line Skateparks - project director



Mr. Dion is the founder and President of New Line Skateparks Inc. He will be responsible for directing all action as it relates to project development. Mr. Dion is a seasoned active skateboarder and father of 5 who has tirelessly dedicated himself to the promotion of action sports across Canada and throughout the world. He serves as an executive board member of Canada Skateboard (the organization responsible for overseeing Canadian Skateboarding's debut in the 2021 Olympic Games) and has provided his professional consulting and construction services for over 450 skate/ BMX parks across Canada, the United States, Europe, and Australia. In addition to receiving numerous recognitions for his work (including the esteemed Canadian Society of Landscape Architects National Honour Award), Mr. Dion is regularly featured in prominent Canadian and international media publications for his unique community recreation contributions.

Trevor Morgan BComm

New Line Skateparks - vice president / principal



Mr. Morgan is an active skateboarder with over 22 years of large-scale municipal project development experience. His dedicated work has contributed to the creation of over 250 highly recognized ongoing youth organizations, public skateparks, and emerging sport programs across Canada, the United States, Europe and South America. Mr. Morgan is also an internationally respected speaker on the subject of municipal youth park / wheeled sports facility planning - presenting on a regular basis to Provincial/State planning and recreation organizations across North America. In addition to his role as Director of Business Development, Trevor will be responsible for community needs analysis and facility development strategy.

Kanten Russell

New Line Skateparks - senior skatepark designer



Kanten is a globally recognized professional skateboarder with over 14 years of international experience endorsing his pro model shoes and signature skateboards. Kanten worked for the City of Chula Vista in the engineering/surveying department followed by a decade in the architectural design world serving as a skatepark development consultant. Since turning to design, Kanten has spent the last 13 years utilizing his knowledge of action sports on over 260 municipal youth park facilities, including skateparks, urban plazas, and progressive pump tracks. Kanten's specialized technical expertise is uniquely informed by his experience on the professional skateboard circuit as well as being a father of 3 girls - resulting in creative material and surface choices as well as compelling variations in flow and complexity of obstacles.

Andy Stone PE

New Line Skateparks - director of engineering / civil engineer



Andy brings nearly 20 years of experience as a senior civil engineer and project manager specializing in land development, infrastructure rehabilitation, water distribution and LID storm water management systems for public sector projects - including over 40 municipal skatepark developments across North America. With a strong project management background, Andy enjoys staying directly involved with the client and project stakeholders as well as technical design leads from all other professional disciplines contributing to the design. Andy was also a professional skateboarder from 1993 to 1999, during which he traveled the world competing and performing demonstrations as well as helping manage a team, assist in art direction, and overseeing production of advertising and board graphics. Andy will serve as lead engineer for the project at hand.

Rob Eng barch

New Line Skateparks - technical design director / design project manager



Mr. Eng is a passionate skateboarder and mountain biker who received his degree in Architecture from Curtin University of Technology, Western Australia. During his 13 year tenure at New Line Skateparks, Rob has applied his skills to over 80 municipal skate and bike park developments across North America and Australia, and has taken over the role of Assistant Operations Manager for our team. Rob has also established himself as one of the industry's leading site integration experts and will be directly involved with public consultation, concept development, estimating and technical design. Working alongside Kyle Dion through every stage of the project.

Jesse Hale ACI Certified Nozzleman

New Line Skateparks - cost estimation / construction planning



Well known in the North American municipal skatepark industry, Jesse Hale is a skateboarding enthusiast, ACI Certified Shotcrete Nozzleman, and concrete skatepark construction specialist. His 22 year career with New Line Skateparks has sent him across North America and Europe leading site operations on some of the world's most complex municipal concrete skateparks, related heavy civil and site works programs, and large-scale skatepark roof structures (over 80 municipal concrete parks to date). An intricate knowledge of skateboarding/BMX culture, design, COR Safety practices, and architectural concrete craftsmanship have positioned Jesse as a leader in our field. Jesse will serve as lead Cost Estimator and assist with construction strategy for the entire skatepark redevelopment.

Everett Tetz

New Line Skateparks - director of community partnerships



Everett Tetz is a former Vice Principal of the Red Deer Public School district. He has a breadth of experience working with youth and was an active member of the provincial Diversity, Equity and Human Rights committee for several years. Everett has a passion for re-thinking the way we connect with youth and believes that their involvement in education and community needs to be meaningful and authentic. In 2013, Everett created Skate Class - a school based skateboarding program that is the first of its kind in North America with it's own locally approved curriculum. Everett has since launched a non-profit organization that seeks to connect marginalized populations to their communities by providing mentorship, training, and support, through skateboard programming and outreach. Everett is eager to connect with communities across Utah interested in involving youth, community agencies and other stakeholders in the planning, designing and building of custom skatepark facilities and exploring a variety of programming opportunities. As a value-added service for the project at hand, Everett will be available to meet with local programmers/ School Administrations and share the Skate Class curriculum, and assist the City / local community groups with exploring the creation of other sustainable/ongoing, community-driven skatepark programming initiatives.

Banff National Park Skatepark Banff, AB

Destination Park

Another first for international skateboarding... The completion of the Banff Skatepark marks the introduction of the first integrated public concrete skatepark within a North American National Park setting. Part of the UNESCO Rocky Mountain Parks World Heritage Site, Banff National Park is Canada's largest and most renowned National Park with over 3 million visitors a year making the pilgrimage from across the globe. Recognizing the importance of the site and gravity of the unprecedented development opportunity at hand, our team embarked on an intensive 12 month design and construction process involving local skateboarders, civic officials, and planning experts from Parks Canada. Along with achieving a world-class selection of modern skatepark and pumptrack style terrain, critical environmental stewardship, wildlife preservation, and architectural control requirements had to be addressed in a manner fitting for Banff's unique 'heart', culture, and breathtaking surroundings. The result is a facility of global significance, demonstrating a thoughtful balance of compelling skateable architecture, sustainable design, and signature accents that reflect the best of Banff's unmistakable character.

Timeline: Spring 2017 - Spring 2018
Client: Town of Banff

Team Responsibilities:
 - site analysis and public process
 - conceptual and final design
 - full construction services



BANFF NATIONAL PARK



Banff National Park Skatepark continued



Topaz Skate Plaza + Bike Skills Park Victoria, BC

The City of Victoria's Topaz Skate Plaza and Bike Skills Park serves as one of Canada's largest integrated action sports venues and is quickly gaining world wide attention as a top skateboarding and BMX/Mountain bike destination. On top of premium plaza, obstacle, pump track, and modern bowl terrain, the development features integrated rain gardens, custom lighting and sculptural elements, innovative wayfinding and shade structure elements, and extensive viewing areas, event space and formalized pedestrian corridors. Our team was proud to serve as Prime Contractor and Lead Designer to bring this landmark community project to life for the vibrant community of Victoria.

Timeline: Spring 2021 - Spring 2022
Client: City of Victoria

Team Responsibilities:

- site analysis
- public process
- conceptual and final design
- full construction services
- programming consulting



Nelson Skatepark Nelson, BC Community Park

Located adjacent to the City's expansive mountain bike facility in Art Gibbon Park, Nelson's highly anticipated new world-class skatepark is now open to the public! With strong architectural references to the unique geography of the West Kootenay Region and the City's vibrant arts community, the Nelson skatepark features an expansive selection of versatile plaza, obstacle, and flow terrain complimented by a modern pool influenced bowl unit. The project is the result of years of advocacy and fundraising led by the Kootenay Lake Outdoor Skatepark Society - thank you to everyone involved in this outstanding community initiative!

Timeline: Fall 2012 - October 2013
Client: City of Nelson

Team Responsibilities:

- public process
- fundraising support
- conceptual and final design
- full construction services



Trail Skatepark Trail, British Columbia Community Park

Trail skatepark is nestled beside the Columbia River on the foreshore of Gyro Park. The skatepark is closely integrated into the natural surrounds, sited on the peninsula beside the boat launch with the river and trees close to the facility. From the skatepark, views down the river valley towards the city and Columbia River Skywalk bridge can be seen. The skatepark combines a flowing street section that contains a reference to a local ledge skating spot with distinctive stone cladding, and a bowl to give the local community a variety of terrain. The project is revered by neighbours as a major catalyst in revitalizing the river bank site.

Timeline: 2016 - 2019
Client: City of Trail

Team Responsibilities:

- site analysis and public process
- conceptual and final design
- full construction services



Melfort Skatepark *Melfort, SK*
Community Park

Located at the new Shadd Drive Recreation Complex, the skatepark is over 12,500ft² of hardscape terrain located right at street front and alongside the main entrance to the Recreation Complex. The overall park includes an expansive Flow Bowl and three separated Street Lines surrounding a centralized green space. The Flow Bowl includes four and six foot deep sections, three different extensions, a Pump Bump and multiple hips. The Street Lines include flat ground ledge, manual pad, slappy bank and rail features, as well as three, five and eight stair feature sets, an A-frame, bank hips, up-gaps, a transition pocket and a sculptural roller piece. The skatepark ties in well at the entrance to the Recreation Complex, and the centralized green space / gathering area gives the park unique feel and creates comfortable spaces for everybody.

Timeline: 2016- 2017

Client: City of Melfort

Ryan Danberg, Director of Community Services
 (306)752-5911. r.danberg@melfort.ca

Team Responsibilities:

- site analysis and public process
- conceptual and final design
- full construction services


Lake Wilcox Skatepark *Richmond Hill , ON*

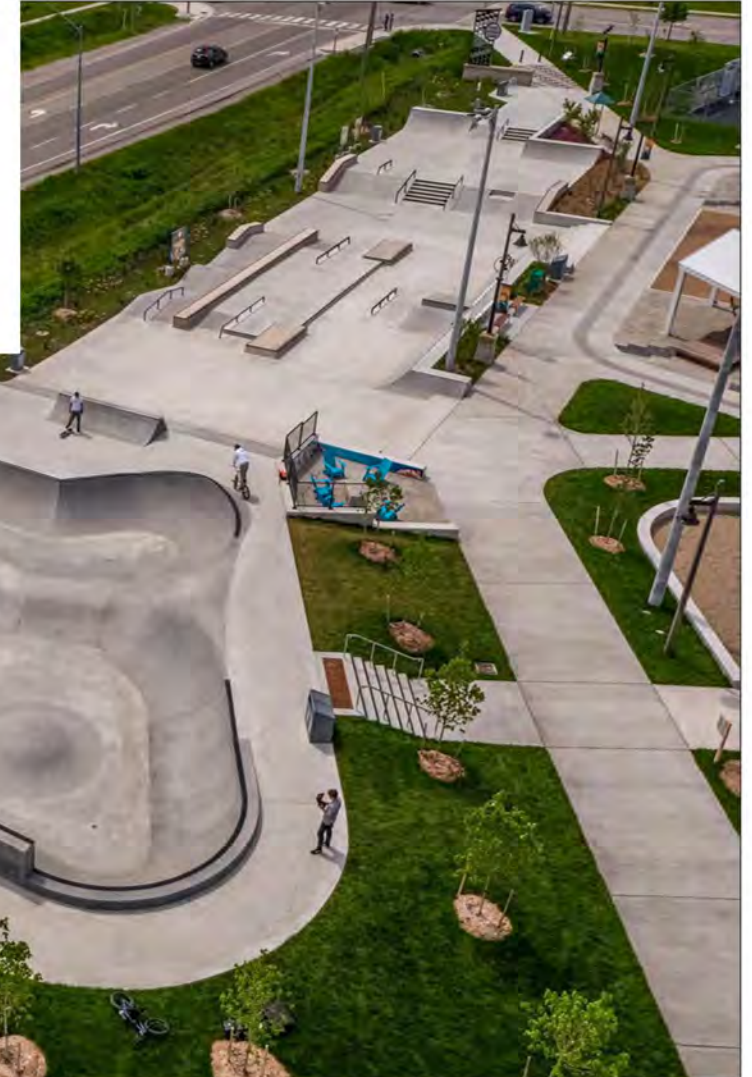
The third phase of Richmond Hill's award winning Lake Wilcox Park is specifically focused on the youth population. In addition to the expansive skatepark, the new Youth Park also includes basketball courts, sand volleyball courts, outdoor exercise equipment, shade structures and an array of public art elements. The skatepark serves as a marquee element within the youth zone and features a main Plaza Area and a separate enclosed Flow Bowl. The Plaza Area is over 200 feet in length and includes flat ground 'street' elements as well as different sized stair sets with progressively more challenging rails and ledges that combine to address beginner through advanced skill levels. The expansive Flow Bowl includes four, six and eight foot deep levels, a 9 foot half pipe with pool block coping, and a dramatic over-vertical 'capsule' 14 feet high, the 'capsule' prominently visible from Bayview Ave.

Timeline: Spring 2016 - fall 2018

Client: City of Richmond Hill

Team Responsibilities:

- site analysis and public process
- conceptual and final design
- construction administration



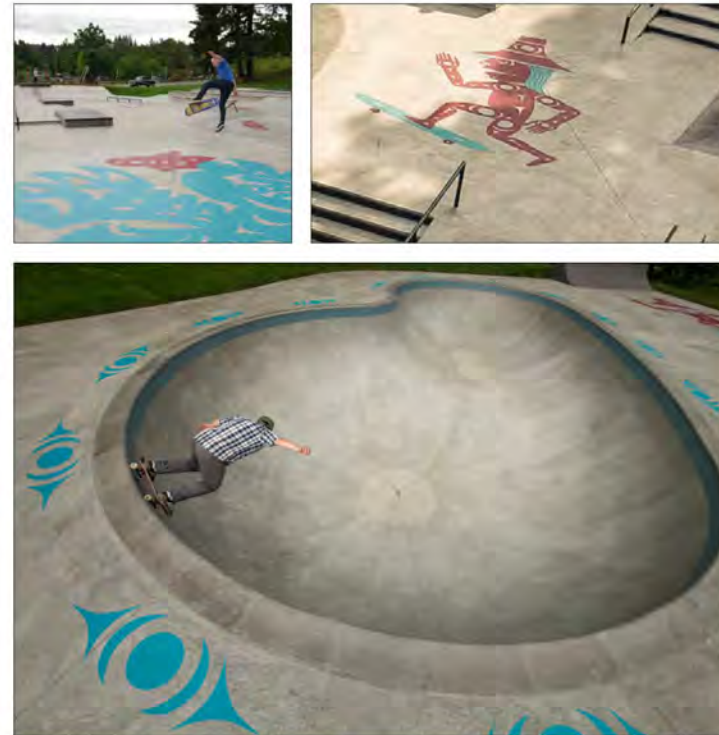
Harewood Skatepark Nanaimo, BC

After years of advocacy, the Harewood Community skatepark is now a reality. The park features a one-of-a-kind pool style bowl and selection of modern technical street skating terrain designed to tactfully integrate with the site's gently sloping grade. Wood carver and illustrator Joel Good of Snuneymuxw First Nation and mainland-based interdisciplinary artist Bracken Hanuse Corlett, who hails from Wuikinuxv and Klahoose First Nations, were then chosen to apply stunning surface murals - including a salmon-filled stream through the middle of the park referencing the Chase River directly beside the facility.

Timeline: Spring 2018 - Fall 2019
Client: City of Nanaimo

Team Responsibilities:

- site analysis and public process
- conceptual design
- final design and specifications



Vic West Skatepark Phase 1 Redevelopment

Victoria, BC Community Park

The 2016 Vic West Skatepark Renovation involved demolishing, redesigning and rebuilding the facility's original phase 1 installation developed in the late 90's. While the original park structure had numerous design and construction limitations inherent of the time of it's creation, it was still popular and appreciated by the community. Our team's challenge was to respect the 'spirit' and heritage of the original structure while developing an entirely new design and construction solution reflective of modern skatepark standards. The design process involved substantial feedback and refinement from the local user community and other key project stakeholders in order to achieve the final balance of terrain and detailing. The result is a versatile, functional, and compelling facility addition that reflects the history, diversity, and progression of Victoria's vibrant skateboarding community. Thank you to everyone who helped make this project a success!

Timeline: Spring 2016 - Winter 2016
Client: City of Victoria

Team Responsibilities:

- site analysis and public process
- conceptual and final design
- full construction services



Peachland Skatepark *Peachland, BC*
Neighbourhood Park

Located in the Town's picturesque Lambly Park, the new Peachland Skatepark offers a truly one of a kind skateboarding and BMX experience in the famed Okanagan Valley! A big thank you from the New Line team to everyone who worked so hard to make this exciting community initiative a reality!

Timeline: Fall 2012
Client: District of Peachland

- Team Responsibilities:**
- site analysis
 - public process
 - conceptual and final design
 - full construction services

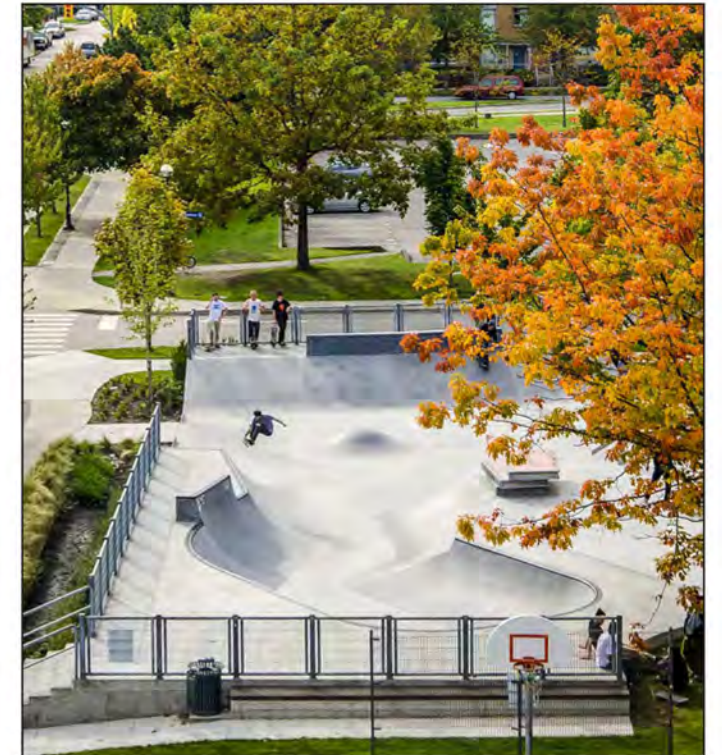


UBC Campus Skate Spot *Vancouver, BC*
Neighbourhood Park

The University of British Columbia is now home to North America's first major University on-campus integrated concrete skatepark! The project represents a ground breaking collaboration between the University Neighbourhood Association and our design-build team. A true result of careful planning and creative thinking by all stakeholders, the signature skate-friendly space and sport court opened in late April 2013 to Nation-wide praise that far exceeded expectations. See a collection of early images of the park in action below.

Timeline: Fall 2012 - Spring 2013
Client: University of British Columbia,

- Team Responsibilities:**
- site analysis and public consultation
 - conceptual and final design
 - full construction services



Westbank Multi-Use Park

Westbank First Nation, BC

This vibrant public park includes a number of outdoor recreational facilities and amenities, including a modern concrete skatepark, asphalt pump track, and multiuse sports court. The overall park not only provides a safe and sanctioned space for local youth/children to socialize and recreate, but an assortment of integrated casual recreation amenities that respect and enhance the natural environment, promote local culture and provide new opportunities for area residents to engage with their community. The concrete bowl meets all the requirements of seasoned transition riders, the flowing pumptrack provides terrain for beginner and intermediate visitors to gain skills, and the sportcourt offers space for a multitude of 'pick up' game activities. The development is a perfect compliment to the adjacent WFN Community Centre and a celebrated destination for local youth and the young at heart.

Timeline: 2016 - 2018

Client: Westbank First Nation

Team Responsibilities

- site analysis and public process
- conceptual and final design
- full construction services



Westbank Multi-Use Park- continued...



Fernie Covered Skatepark *Fernie, BC*

The City of Fernie has charted new ground in British Columbia's Interior by completing the development of the Region's first Roof-Covered Bowl Complex and Modern All-Wheel Plaza. In addition to its primary purpose serving the terrain needs of the skateboarding/scooter/inline/bmx community, the facility was also designed to act an outdoor recreation facility hub - linking the City's downtown core to a corridor of other leisure amenities. In this vein, rideable hard surface elements are seamlessly woven within the context of an inviting public space welcoming to all citizens. Elements such as inviting viewing areas, strong connections to the adjacent trail system, alpine/mining history art installations, and accessibility for those with disabilities was included throughout the facility. Construction was completed in November 2023 with facility grand opening slated for Spring 2024.

Timeline: Fall 2022 - Fall 2024
Client: Fernie, BC

Team Responsibilities:

- site analysis and public process
- conceptual and final design
- full construction services



Barrhead Skatepark and Pump Track *Barrhead, AB*

With a goal of providing the highest durability, greatest design versatility, and most accommodating riding surface for small wheels (skateboard, inline, scooter) AND larger-wheel activities (mountain bike, BMX), the Town of Barrhead embarked on the creation of Alberta's first poured in place CONCRETE PUMP TRACK and modern skatepark combination. The facility was completed in Spring 2023 with considerable fanfare among locals and eager visitors from across Western Canada. In addition to the unique terrain assortment, the facility also features accessible pathway tie-ins, integral concrete colour, and a selection of seating/picnic areas lining the length of the park's perimeter. Park renderings and early construction completion photos illustrate the facility's compelling terrain design and tactful site integration approach.

Timeline: Summer 2022 - Spring 2023
Client: Barrhead, AB

Team Responsibilities:

- site analysis and public process
- conceptual and final design
- full construction services



Fire Station Skatepark Fort Worth, TX

Community Park

The 15,000 sqft skate plaza and pump track was designed and built in close collaboration with funding contributor, Dickies, whose headquarters reside nearby in Fort Worth. The park boasts a range of traditional street and plaza obstacles complimented by an integrated pump track. The thoughtful layout and inclusive approach to the park makes it appealing to riders of every level and discipline. The "plaza" is a street skaters dream with a range of urban architecture such as ledges, hubbas, stairs, banks and hips. The flowing concrete pump track offers an endless circuit of berms, transitions, and bumps to ride through and maintain speed without pushing. Integrated branding through steel works and colored concrete along with integrated planters and landscaping create a space not only for skaters, scooters and bikes but contribute to a now vibrant social space for local community and visitors to meet, interact and recreate.

Timeline: Summer 2022 - Spring 2023
Client: Near South Side Inc, Fort Worth

Team Responsibilities:

- site analysis and public process
- conceptual and final design
- construction administration



Rolling Magic Skatepark Lenexa, KS

This modern skatepark both replaces and pays homage to one of the first generation of concrete skate facilities developed in Kansas. Utilizing a similar footprint and recycling much of the concrete sub base of the original facility, the new park offers a state of the art update and exemplifies the integrated design sensibilities and exacting construction best practices of contemporary skatepark development. Along with a versatile modern transition and street terrain, the final landscaping plan invites individuals of every age to participate, spectate, and enjoy the overall environment. The expansive flow bowl is already sparking a pilgrimage of transition riders from across Kansas while the street section accented serves riders of every ability.

Timeline: Fall 2022 - Summer 2023
Client: City of Lenexa

Team Responsibilities:

- site analysis and public process
- conceptual and final design
- full construction responsibilities



Ed Benedict Skate Plaza Portland, OR Community Park

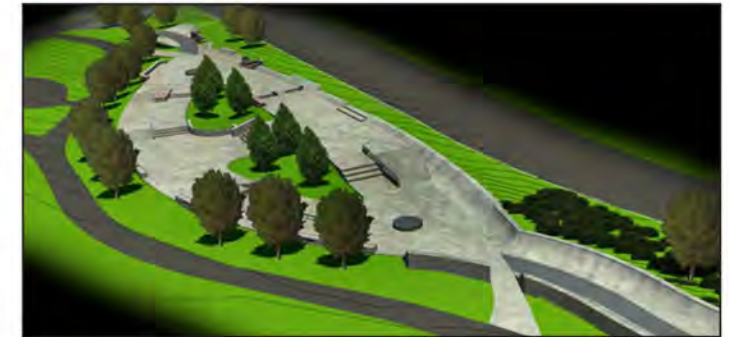
This distinctly organic design features approximately 16,000 sqft of skateable terrain punctuated by a series green channels, sand filtration planters and two major biofiltration islands for natural onsite treatment of stormwater. The project serves as Portland's first legitimate plaza based facility and one of the Pacific Northwest's first 'green' skateparks. The design was developed in close collaboration with artists from Portland's local skate community and features a number of custom sculptural elements, stamp patterns and diverse material combinations. In 2009, the project was profiled in the New York Times for its innovative sustainable design practices.

Timeline: Fall 2007 - Fall 2008
Client: City of Portland

Tread **Lightly**
 urban art project

Team Responsibilities:

- site analysis and public process
- conceptual and final design (including 3D rendering)
- contract administration



Cloverdale Covered Youth Park Surrey, BC Community Park

Located at the city's millennium park - this site features over 100 acres of acre's and passive recreation space for agri-fair, flea markets, museum/archives, recreation centre, ice rinks, and amphitheater/performance centre. Our team was asked to develop a significant public space at the main entry to the Fair Grounds, adjacent to a landmark recreation centre, and provincial highway. Working with our multi-disciplinary team, we developed a solution that provides for strong access points, site safety for users after dark, thoughtful and playful LED lighting effects within the roof structure to stimulate off-season use of the facility, and public interest. As well, the facility needed to be 'forward-thinking' but still respect an agricultural heritage of the site. The design solution utilized wood/heavy timber construction for the roof top canopy in a very rectilinear linear form that provides an 'edgy' vertical element, that compliments the hard/sculptural lines of the skate plaza terrain. The park has seen sustained, positive use by skateboarders, BMX, and inline users since opening.

Timeline: Summer 2013 - June 2014
Client: City of Surrey

Team Responsibilities:

- site analysis and public process
- conceptual and final design
- full construction services



Cloverdale Youth Park Continued...



The Plaza at the Forks, Winnipeg MB

Size: 48,000 sqft.

Timeline: Feb 2005 - July 2006

Owner: Forks Renewal Corp.

Contact: Paul Jordan, 204.987.4371

Team Responsibilities:

- site analysis and public process
- park programming
- conceptual and final design
- shotcrete construction services
- project management

Canadian Society of Landscape Architects

National Honour Award



Skaters for Public Skateparks Public Space Award



Covering a total area of over 44,000 square feet, the Plaza at the Forks consists of a meticulously detailed skateable sculpture plaza and expansive modern bowl complex tied seamlessly into the heart of downtown Winnipeg's urban fabric. The facility is the first of its kind within the world and has quickly become one of Winnipeg's most celebrated public places and a destination for skateboarders and other urban explorers from around the globe.

The concept for the Plaza was unique from the onset. The Forks, aptly named due to its position marking the amalgamation of Assiniboine and Red rivers, serves as one of Winnipeg's preeminent meeting places. The area is steeped in over 6000 years of cultural and historical significance and is visited by over 4 million people each year for a range of attractions and activities. Accordingly, the riverside setting is highly programmed with stringent development guidelines and a commitment to utmost site sensitivity. Our team's challenge was to preserve the essence of this beloved public space while introducing a thoroughly modern world class youth/skatepark.



The Plaza at the Forks, Winnipeg MB - continued...

The result is an urban landscape like no other. Far from the typical skatepark, the Plaza at the Forks is better described as a premier urban park/plaza and gathering place that is 'perfect for skateboarding'. On any given day, one may see up to hundreds of visitors skateboarding, inline skating, biking, viewing art, strolling through, or simply sitting by to watch and socialize. It has truly become a place for all ages, backgrounds, and interests to enjoy.

Central Plaza - 29,000 sqft: Inspired by prized skate spots around the world and the rich history and culture of the Forks city, the main plaza area is made up of an endless combination of stair sets, banks, rails and ledges set within a host of custom sculptures and other art pieces - the majority of which may be ridden by skateboard, BMX or inline skates. Along with input from heritage and culture experts, our team undertook extensive consultation with leaders of the local skateboarding and art community to devise a final layout and detailing that would be optimal not only in skate function but also true to the culture and feel of the Forks and City of Winnipeg. Particular highlights include:

- 'Spirit Fish', a skateable sculpture designed to represent the nearby rivers and the mystical 6000 year old catfish that used to inhabit their waters - painted by local artist Pat Lazo
- 'Magic Carpet', a super elevated and perfectly skateable concrete ribbon track referencing the railway lines that met at Winnipeg's main terminal within the Forks until 1923
- Numerous granite capped benches, ledges and blocks
- Wire cut stone and acid etched concrete accents
- Original Forks brick inlaid on pedestrian walkways



The Plaza at the Forks, Winnipeg MB - continued...

Bowl Complex: Separate and adjacent to the Central Plaza, lies an 8,500 sqft. bowl unit combining traditional pool and modern coping lines. Walls begin at 5 feet and progress through a series of hips, elevators, extensions, and a pump bump to a massive 17 foot cradle and 13 foot over-vert pocket. Ridden by beginners through to the likes of Tony Hawk (who recently touted the park as 'amazing'), the bowl can often become the center of activity with hundreds of spectators in the surrounding informal viewing areas.

Our team finished the park off with unique lighting, a network of 'safe' pedestrian walkways and viewing areas, and consultation on the creation of an 'Ambassadors' program designed to educate visitors on skateboarding etiquette and ensure an enjoyable experience be had by all.

The entire project is built on state of the art construction and engineering designed to withstand the difficult ground conditions and dramatic temperature fluctuations characteristic of the region. Proven cold weather skatepark construction techniques developed by New Line Skateparks were matched with innovative void forming and reinforcement technology implemented by PCL and local engineers. Over 200 precast piles, highly specialized concrete mix designs, and an expansive grade beam system will ensure maximum surface integrity over many decades to come.



PROJECT TIMELINE AND APPROACH



METHODOLOGY AND SCHEDULE

The following pages reflect our detailed work plan and project schedule. While we are confident in the rationale for our methodology, our team is always open to adjustments in cooperation with the Client to best serve the project. We have been careful to monitor our company growth and workload over the last 22 years and offer our full confirmation that our key project staff outlined in this proposal will have adequate availability and resources to execute the design-build undertakings proposed. Our project commitment involves a highly responsive, in-person consulting presence and interaction with the Client and community, taking advantage of our unparalleled history of work in the region, and our intimate understanding the of the design-build challenge that lies ahead.

Phase 1: Site Analysis, Community Consultation and Concept Design

Task	Specific Objective	Timeline/Deliverables
1.	Project Initiation, Program Review and Site Base Data Collection The Design-Build Team will meet with the Client to review the intended program for the skatepark development. At this time, project goals and objectives will be confirmed, timelines set, processes reviewed, lines of communication/communication protocol established (including a suggested weekly update meeting day and time), and COR safety and ISO 9001 generally compliant quality assurance measures outlined. The Consulting Team will then work with the Client to review the available base data for the site. This will include survey and geotechnical information as well as other pertinent data related to grades, irrigation, existing vegetation, current and future site development. This information will contribute to the base for all future planning and design work. Finally, we will also work with staff to confirm our stakeholder outreach strategy (if any) and implementation tactics in preparation for our first community design workshop exercises.	Meeting minutes key contact Informa- tion Project Journal initi- ated Proposal concepts and budget reviewed Project safety, envi- ronmental and qual- ity assurance plan submitted
2.	Create Base Maps and Site Analysis Drawings Using information gleaned from task one, the design team will prepare base maps from which all future design work will be based. This is critical to ensure that design development adheres to an accurate site specific data set and the design team does not encounter unexpected site conditions later in the technical design phase.	

Phase 1: Site Analysis, Community Consultation and Concept Design...

Task	Specific Objective	Timeline/Deliverables
3.	Skateparks 101 Community Design Workshop 1 Prior to engaging in conceptual design development, the consulting team will conduct an in-person and/or virtual steering committee project information session and design workshop. This ~1.5hr session (<i>either Virtual or in Person</i>) usually takes place in the early evening at a time convenient to participants. The workshop will begin with a presentation introducing the project team and objectives, an overview of the skatepark development journey, and an exciting case study based review of modern concrete skateparks and the activities they facilitate (our internationally recognized 'Skateparks 101' presentation). Once attendees are familiarized with the project parameters and vast array of skatepark development possibilities / options, the workshop will then transition to a comprehensive, interactive component consisting of an online 'dotmocracy' exercise, interactive drawing/sketching, writing, discussion, modelling of specific park layout/features, and site integration options. The workshop will conclude with a general summary of the input received and the collection of all participant sketches and feedback forms and/or digital surveys. Attendees will be encouraged to continue submitting ideas and comments through our custom online survey until such time that the design team returns for the next design workshop.	<i>Week 1</i> Prepare and conduct virtual workshop Minutes and summary report of workshop submitted to Owner Online forum open for continued feedback.
4.	Begin Development of Alternate Design Concepts The consulting team will tabulate information from the first participatory design workshop and initial key stakeholder meetings (if applicable) to begin developing concept directions. Our experience has shown us that one dominant design detail will begin to emerge through this process, although we will offer a couple concept directions for feedback. Our team is prepared to provide design for all aspects of the surrounding site area as highly integrated design approach.	Workshop feedback tabu- lated into spreadsheets, written summary, and presentation graphics for Owner and Public re- view. In-progress design sketches provided to Owner and posted online for continued feedback
5.	Internal Review of Preliminary Budget Concept Options The consulting team will meet with the Client to review the concept development progress and discuss budgetary issues. The concept designs will continue to be refined and the cost implications of the preferred concept(s) will be evaluated in preparation for presentation to the steering committee.	<i>Week 8</i> 2D concept drawings and preliminary cost estimates reviewed with Client

Phase 1: Site Analysis, Community Consultation and Concept Design...

Task	Specific Objective	Timeline/Deliverables
6.	Presentation of Preliminary Concepts - Community Design Workshop 2 Comprehensive 2D renderings of the preliminary concept design options will be brought back to the community for feedback through a second interactive design workshop (<i>either Virtual or in Person</i>) on a weekday evening convenient to the group. The concept presentation will consist of a PowerPoint aided overview of the development process to date, a discussion of the guiding principles established at the first participatory workshop, and a thorough review of the site-specific concept design(s) developed for the skatepark. This will be followed by a general Q&A session and opportunity for attendees to vote (via feedback form) on the preferred concept directions + submit suggestions for any final modifications of the final concept design. The workshop will conclude with a summary of input received and the collection of all written feedback forms and/or digital survey.	<i>Week 14</i> Prepare and conduct virtual workshop 24" x 36" presentation panels of 2D skatepark concept renderings. Concepts will be posted to online forum for continued voting.
7.	Preparation of Preferred Concept Design and Review with Client Detailed 3D renderings and updated cost information of the preferred concept will be prepared and then reviewed with the Client for comment and feedback.	
8.	Submission of Final Concept Design and Phase 1 Summary Report Any modifications as a result of the final design review will be prioritized for implementation and work will begin on the final 3D concept adjustments in conjunction with the Client. We will update our plans so that the preferred park concept is fully dimensionally correct and technical drawings can proceed with ease. The final park concept and Phase 1 summary report will be submitted to the Client and we will be available to conduct any final presentations to relevant parties as required.	<i>Week 16</i> Final 3D concept design renderings and conceptual cost estimate+ Phase 1 summary report.

Phase 2: Technical Design and Construction Drawings

Task	Specific Objective	Timeline/Deliverables
1.	Begin Working Drawings and Specifications We will begin work in earnest to complete the technical specifications and working drawings for the youth park project. We anticipate a time frame of 2 weeks until we can submit 50% drawings for discussion and review with Client Staff.	<i>Week 1</i>
2.	Complete Construction Drawings Reviews The technical design team will complete all construction detailing, construction documents and specifications for the skatepark project. Drawing sets and cost estimates will be sent to the Client and relevant approval bodies for full red line review and approvals at 50%, 75%, and 100%. Update meetings to review and approve potential in-kind donations will also be conducted at each drawing review milestone.	50%, 75%, and 100% complete drawings, and cost estimates
3.	Delivery of Final Construction Drawings Any last amendments will be included in final construction documents and specifications. Final sealed drawings, specifications, and Class A budget package will be sent to the Owner in accordance with the desired file scheme. Any changes made during construction will be provided via 'as built' drawings upon completion.	<i>Week 8</i> Copies of IFC drawings package, specifications, and final budget delivered to Owner in CAD and PDF formats

Phase 3: Construction

1.	Construction Mobilization The construction team will meet with Client to review the priorities for park construction and a detailed schedule for completion of key milestones within each phase of construction. Our key COR (Certificate of Recognition) site safety policies, environmental program, and ISO 9001 generally compliant construction quality assurance measures will also be confirmed at this time. We will also work with the Client to physically verify the site fencing, construction access and staging areas, and traffic control realities.	<i>Week 1</i> <i>Weekly meeting date with Owner set. Construction progress meeting minutes to be submitted weekly.</i>
----	---	---

Phase 3: Construction...

Task	Specific Objective	Timeline
2.	Layout, Demolitions and Site Preparation The construction team will layout all design grades, complete all required demolitions and removals, and prepare the site for grading and drainage.	<i>Week 1</i>
3.	Grading & Drainage The construction team will proceed with installation of the drainage system. Any required site servicing will be roughed into the park area at this time. Base design grades will then be established.	<i>Week 2</i>
4.	Fine Shaping / Banks & Transitions Once the rough grades are established and the drainage is installed, we will proceed with fine shaping of the park elements. The park construction team will then assess the weather forecast. If weather is favourable for pouring concrete, our team will proceed with installing the banks and transitions. All banks and transitions are poured in small, controlled panels to ensure proper shaping and finishing.	<i>Week 4</i>
5.	Flat Slabs Once all banks and panels are complete the construction team will prepare, form and pour the base slabs. These sections will require favourable weather as they are larger pours.	<i>Week 9</i>

Phase 3: Construction...

Task	Specific Objective	Timeline
6.	Ledges & keystone features Upon completion of the banks, transitions and flat slabs, the construction team will proceed with forming and pouring all ledges and keystone features.	<i>Week 12</i>
7.	Clean Up / Demobilization and Facility Grand Opening Upon completion of all construction works, our team will remove debris and prepare the park for public use. At New Line Skateparks, we also take pride in participating in the skatepark opening ceremony and dedication events by helping organize professional skateboarding talent and prizes for the community. We are committed to employing our full resources for completion of the project in a timely manner to maximize community use for the season. Construction of the park is expected to take 13-15 weeks from mobilization. It is our intention to work efficiently until project completion. Should severe weather alter our work program, we will adjust our schedule to ensure quality control.	<i>Week 14</i>



FEE PROPOSAL

FEE STRUCTURE

Phase 1: Site Analysis, Community Consultation and Concept Design

Site analysis
Community consultation program
Presentation materials for all meetings
Meetings with staff to review progress
Development of preliminary and final 3D rendering concept boards, illustrative drawings and cost estimates
Assistance with In-Kind Donations Program Development

~4% - 5% of target construction budget + GST

Phase 2: Technical Design and Construction Drawings

Detailed design development and professionally sealed construction drawings + specifications
Prepare technical specifications and final cost breakdown

~5% - 6% of target construction budget + GST

Phase 3: Construction

Completion of all skatepark construction works
As built drawings

TO BE DETERMINED BY OWNER

Upset Construction Budget to be Established with Owner at Conclusion of Phase 1

- * Not to exceed construction budget to be established by Owner. 2 yr legacy cost data indicates average per square foot construction costs falling in the range of \$75/sqft - \$85/sqft throughout Interior British Columbia.
- * Fees include all travel
- * **Billing will be submitted on a percentage of project completed basis.**
- * Construction Phase will not begin until Owner has approved design documents and final funding is in place.
- * Pricing is commensurate with the Canadian Society of Landscape Architects' Fee Guidelines and is consistent with similar projects completed throughout British Columbia
- * Site Base Data (Geotechnical and Survey) to be obtained from local providers at cost + 10% (if not provided by Owner), and will be taken from construction budget.



PROJECT **REFERENCES**

CARRINGTON SKATE SPOT, CALGARY, AB



ENGINEERING & PUBLIC WORKS DEPARTMENT
PARKS & SOLID WASTE SERVICES DIVISION
1100 Patricia Blvd. | Prince George, BC, Canada V2L 3V9
p: 250.561.7600 | www.princegeorge.ca

October 18, 2016
Project: Skate park at Cpl. Darren Fitzpatrick – Bravery Park

Kyle Dion
New Line Skateparks Inc.
101, 6249 205 Street
Langley, BC V2Y 1N7

Re: Recommendation letter for New Line Skateparks Inc.

To Whom It May Concern,

It's my absolute pleasure to recommend New Line Skateparks Inc. after a successful completion of the skate park at Cpl. Darren Fitzpatrick – Bravery Park, City of Prince George on September 2016.


I thoroughly enjoyed my time working with them, and came to know staff and crew on the ground as a reliable and knowledgeable group. They were honest, dependable, incredibly hard-working and committed to safety.

The complete project from opening ground to completion was done on a period of three months from the second week of June to the first week of September. Their knowledge and expertise on skate park's design and construction was a fundamental key for the success of the project.

Without a doubt, I confidently recommend New Line Skateparks Inc. for the design and construction of any future skate park.

Please feel free to contact me at the City of Prince George, Parks & Solid Waste Services division should you like to discuss New Line Skateparks Inc. work any further. I'd be happy to expand on my recommendation.

Sincerely,


Michael Le Morvan, ASCT
Project Manager



The Corporation of the District of Peachland

5806 Beach Avenue
Peachland, BC
V0H 1X7

Phone: 250-767-2647
Fax: 250-767-3433
www.peachland.ca

December 5, 2012

New Line Skateparks
Attention: Kyle Dion
Suite #101 6249 205th Street
Langley, BC V2Y 1N7

Dear Mr. Dion,

On behalf of Council and the community, I would like extend thanks to you and your team for both the design and build of the Peachland Skate Park. For many years, a skate park has topped Peachland youth's most wanted list, and I am thrilled to see the project finally come to fruition.


Skate parks are not without controversy. Your work with staff on the public consultation sessions and information to the public was very valuable in moving this process forward. Additionally, your team considered the unique character of Peachland and in particular the highly visible location of the park and designed features that are both attractive to residents and functional to users.

My thanks in particular go out to Tim Dubbin and Jesse Hale for delivering this project on time and on budget. Our Chief Administrative Office, Elsie Lemke visited the site during construction and was impressed with the orderly site construction, and that your staff was cognizant of the importance of delivering this project within its budget parameters.

As soon as the New Line team lifted stakes, there were users on the park. With the project complete two weeks early, skate park users have been able to take full advantage of the mild fall to put the park to good use.

Please pass along my gratitude to your staff for a project well done.

Sincerely,


Keith Fielding
Mayor, District of Peachland

c. Council
CAO Elsie Lemke
Director of C.S. Cheryl Wiebe

December 5, 2022

To whom it may concern,

On behalf of BGC Kawarthas, an agency that serves 8000 children, youth and families in Kawartha Lakes, I'd like to provide this letter of recommendation to New Line Skateparks Inc. New Line Skateparks worked with us in a design and build contract to produce a \$870,000 park for skateboard, scooters and BMX bikes which was completed in November 2022.

Our engagement with New Line began in 2021 as we prepared grant applications for federal and provincial funding and became formal after our grants were approved. Throughout the concept development, design, mobilization and construction stages, New Line was fantastic to work with. Each of the principals we dealt with on a regular basis were professional and knowledgeable. They responded quickly and thoroughly to our questions and comments, and helped us adapt to the vagaries of grant funding and government timelines without hesitation. The team worked with us to maximize the size of park and its amenities based on our available budget and delivered on time and on budget.

Onsite, all of our staff found the mobilization and construction crews to be polite, helpful and hard working. They didn't just deliver on their side of the contract, but went above and beyond to make sure we were a happy client. They also showed great respect for the kids and youth who attend our programs, and demonstrated respect for our community and neighbours.

It was a pleasure to work with New Line Skateparks Inc. and we highly recommend them.

Sincerely,

Amy Terrill
Executive Director

Registered Charitable Organization No. 89919 8873 RR001

May 10, 2018

Newline Skateparks
#3 6923 Farrell Road SE
Calgary, Alberta
T2H 0T3

Re: Design-Build Skatepark in Legacy Park, Lethbridge, Alberta


In 2016 we hired Newline Skateparks through a Design-Build process for a significant concrete plaza style skateboard facility located within Legacy Park (project budget in excess of \$700,000). Newline was responsible to understand our general requirements including the concept, budget and design intent. They were also responsible to work directly with the stakeholders of the Skateboard community to arrive at a final design for the facility. Several meetings were held with the stakeholders throughout the process which went smoothly and accomplished mutual satisfaction.

The design phase transitioned easily into construction without issue. The in-house construction team were knowledgeable and efficient in their work. They kept us up to date, flagged any issues and always provided recommended solutions. The entire construction process went very smoothly because of the seamless relationship between the design and construction teams.

The finished park is a well thought through design and quality construction which was easy to administer and required very little field supervision or dedicated project management from the City. The relationship with the stakeholders was professionally managed throughout and we are left with a stronger relationship with them because of the process.

We are happy to recommend New Line Skateparks and the Design-Build process because our project was so successful from beginning to end. Throughout the process Newline provided us with professional guidance, friendly service and a high quality finished product.

Sincerely

A solid black rectangular box used to redact the signature of David Ellis.

David Ellis
Parks Manager, City of Lethbridge