



building communities together

2025 Business Plan Wildwood Sewer (1773)

*Kelly McDonald
Manager of Utilities*

Working in partnership with communities large and small to offer local, sub-regional, and regional services to ensure that the Cariboo Chilcotin is a socially, economically, and environmentally desirable region.

Department Services

- The Cariboo Regional District (CRD) owns and operates the Wildwood Community Sewer System.

Background Information

- The Wildwood Sewer function was established in 1979 and now services approximately 195 land parcels.
- The system is comprised of aerated sewage lagoons, two lift stations and associated sewer piping.
- Regular inspection and maintenance of system components is undertaken to ensure continuous operations.

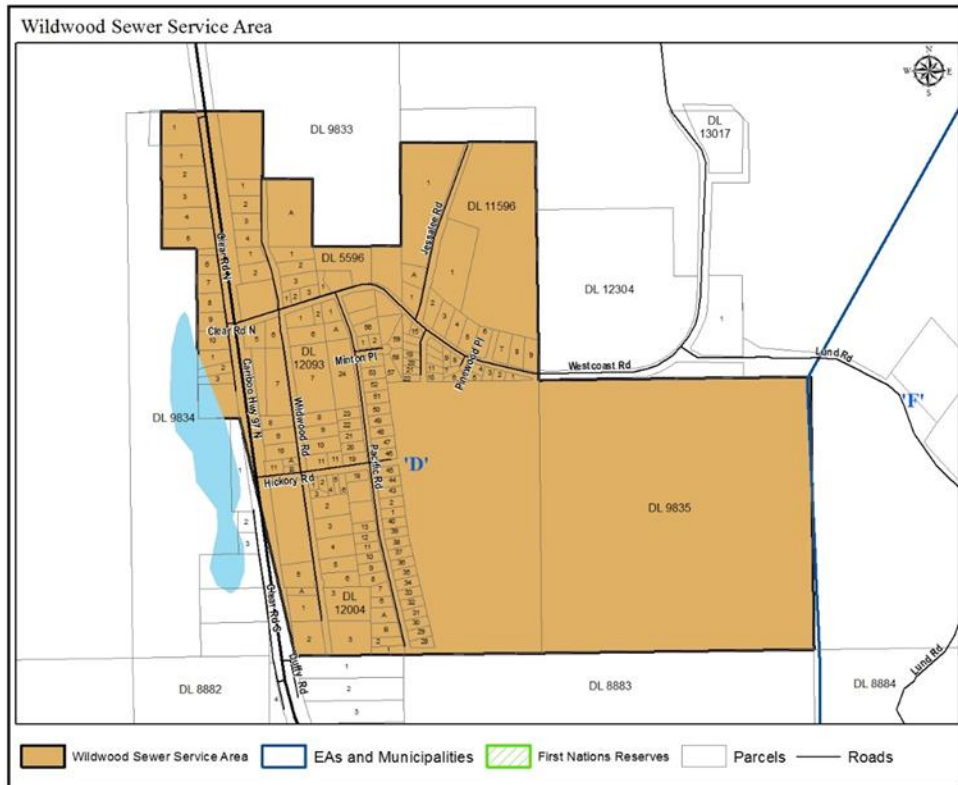
Operations

Day-to-day operations include checks on the pump stations, cleaning tanks and monitoring the lagoons by way of visual checks and lab sampling of effluent.

Function authority is provided by the Wildwood Specified Area Sewer Management Bylaw No. 2141.

Bylaw 5365 authorizes the CRD to cover the costs of the service by way of taxation of assessed property, parcel tax and user fees.

As Electoral Area D is the only stakeholder, and the *Local Government Act* requires more than one vote, the entire Board is responsible for the governance of this service.



Significant Issues & Trends

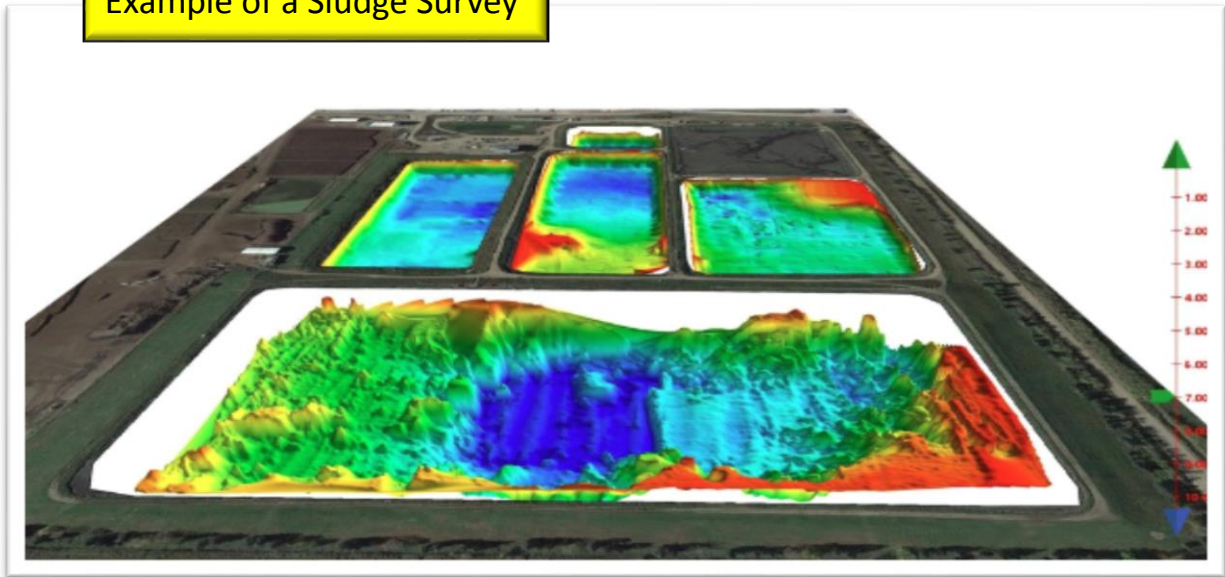
The Public Sector Accounting Board requires local governments to report and record tangible capital assets. At some time in the future, local governments may be required to amortize these assets over their useful life. Currently a gap-analysis survey is being conducted before an asset management plan is initiated. An inventory of Wildwood infrastructure is being conducted.

Business Plan Goals, Objectives & Strategies

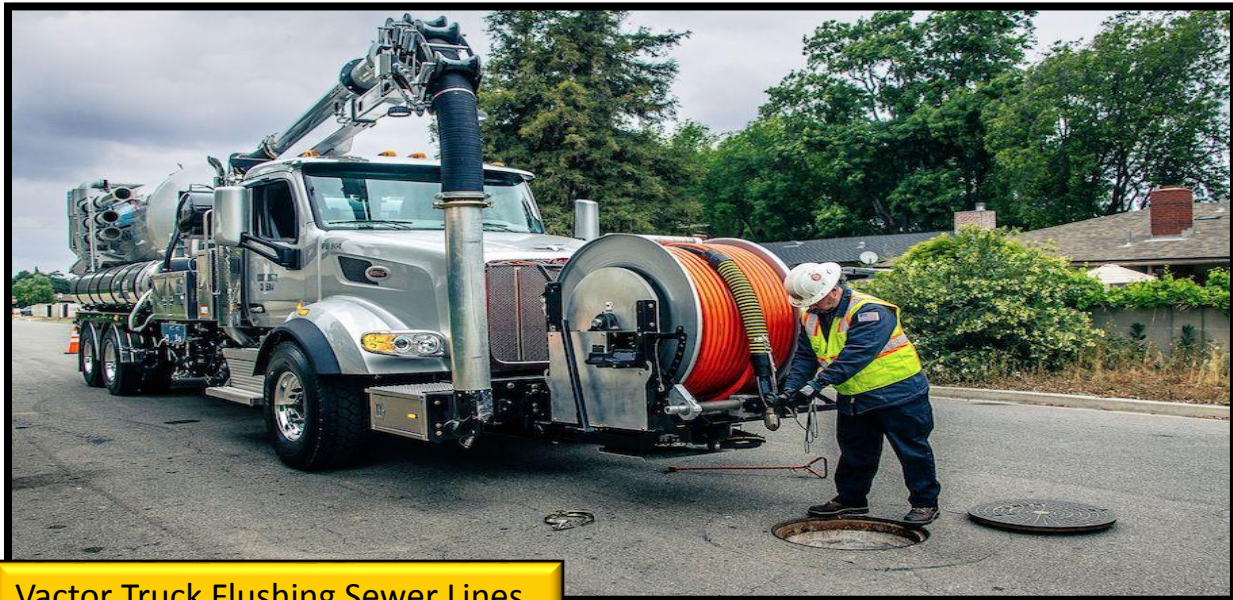
1. **Goal:** Obtain data on the efficiency of sludge digestion in the Wildwood Lagoons.
Rationale: Sludge depths and capacity loss have not been assessed in recent memory. To protect the lagoons from potential overload, this should be completed.
Strategy: Commission a sludge survey of the Lagoons by way of ROV lidar mapping.

2. **Goal:** Replace submersible pump, rebuild old one as a spare.
Rationale: Pumps are nearing end of life, rebuilding one as a spare for redundancy.
Strategy: Purchase new pump, rewind and refurbish old pump.

Example of a Sludge Survey



- Goal:** Flush system mainlines to prevent potential sewer backup.
Rationale: Maintain the system to prevent potential costly sewer backups and unnecessary damage.
Strategy: Secure a flushing truck company to clean Wildwood sewer mains.



Vactor Truck Flushing Sewer Lines

Overall Financial Impact

The projected capital reserve as of December 2024 is \$31,885.

Taxation is collected by way of a parcel tax of \$113 per year.

The current residential user fee is \$252 per year and may increase in 2025 to match the growing needs of this service and inflation.