



## CITY OF WILLIAMS LAKE

DATE &  
ITEM NO.

**November 18 2025-C3a**

RES #

**RES #429/25**

**SUBJECT** Williams Lake Daybreak Rotary Club Partnership Proposal - Dog Park  
Moved and Seconded

That the report of the Director of Community Services dated October 29, 2025 be received for discussion and Council refer consideration of a future dog park as part of the upcoming development of a new Parks and Trails Master Plan; and further, that this matter be referred to the Central Cariboo Joint Committee for discussion.

CARRIED

**RECORD OF VOTE (UPON REQUEST)**

YEAS \_\_\_\_\_

NAYS \_\_\_\_\_



## CITY OF WILLIAMS LAKE COUNCIL REPORT

**DATE OF REPORT:** October 29, 2025  
**DATE & TYPE OF MEETING:** November 18, 2025 Regular Council Meeting  
**AUTHOR:** Stacey Miranda, Director of Community Services  
**SUBJECT:** WL DAYBREAK ROTARY CLUB PARTNERSHIP PROPOSAL -  
DOG PARK  
**FILE:** 6130-20-07

---

### Recommendation

That Council receive this report for discussion and refer consideration of a future dog park as part of the upcoming development of a new Parks and Trails Master Plan.

### Purpose

The purpose of this report is to share information regarding the proposal submitted to Council via letter on July 14, 2025, from the WL Daybreak Rotary Club President Andrew Sandberg, and to provide an analysis of the dog park options as directed by Council Resolution #277/25 (Attachment 1).

### Discussion

#### *Background*

The Williams Lake Daybreak Rotary Club (the Club) presented a proposal via written submission an off-leash dog park inside the current Comer Park on July 14, 2025 (Attachment 2). The Club requested support, in-kind and financial, to contribute to their planning and fundraising activities. Staff met with Andrew Sanberg (the Club President) on October 24, 2025, and reviewed options for the dog park location. The Club indicated that, at present, there are no plans for fundraising or grant applications, as the WL Daybreak Rotary Club is focusing on a Musical Playground proposal.

Currently the City has one official dog park located in Boitanio Park. This facility has two sections, one for small dogs and the second for small to medium sized dogs. There are no amenities inside either dog park space. The Dog Park was installed after the development of the current Parks and Trails Master Plan (2010-2020). In this plan section 3.3.12 noted the gap and the desire from the engagement process to have one installed (Attachment 3).. In this same report, Initiatives Section 6.2.2, page 52 (Attachment 4) notes areas for consideration of an off-leash dog park, both of which are not the current location of the dog park. It is also noted that at the time, Comer Park was not a consideration for an off-leash dog park. The current area of the dog park in Boitanio Park is not suitable for medium to large dogs. Larger dogs require spaces to reach full speed potential, as well as spaces to work on socialization, with options for singular space interactions. Many dog park articles and designers suggest a minimum of three acres (1.2 hectares) for medium to larges dogs, with room for expansion.

### ***Analysis***

The City has a history of partnering with the Club (and other non-profits) to install recreation equipment in parks. For example, a positive in-kind partnership was successful for purchasing and installing the Bouldering Rock in Boitano Park. At that time, The City of Williams Lake provided in-kind support, and the WL Daybreak Rotary Club purchased the equipment.

It was noted in the discussions with Mr. Sandberg, that the Club is focussing on other projects (such as the Kiwanis Park musical equipment) ahead of the proposed dog park. Despite the lack of urgency on this project, the Comer Park location is still the preferred location of the Club. Other locations did not suit the size requirements or access to utilities, parking and irrigation.

Prior to meeting with the Club, staff reviewed options for several park and open spaces in the City for the development of a future dog park. A reference matrix was developed by staff across City departments to score these options and is attached to this report for information (Attachment 5). Based on this high-level review, staff concurred that Comer Park is likely the most beneficial location for a dog park.

### **Potential Locations in Comer Park**

Staff discussed options for dog park placement at the preferred location in Comer Park with Mr. Sandberg, detailing two potential options (outlined in Attachment 6) that could be undertaken without removing the baseball field. Based on this conversation the following points were identified.

- **Option 1** (to the west of the baseball field) does not meet the desired requirements of the WL Daybreak Club.
- **Option 2**, shown on the attached map, would require utilizing part of the field currently utilized by School District #27 (Nesika Elementary School). This Nesika Elementary School field space has irrigation, potential for parking, potential for park amenities and potential for bleacher seating. Potential expansion from the Nesika field into the lower half of Comer Park would be required and irrigation additions could become costly.
  - School District #27 currently has joint interest with the City of Williams Lake in the Nesika field. If Council wished to proceed with adding a dog park in this area, significant consultation and engagement with the School District would be needed first.
  - During the discussion, this section of the park and field would meet the desired outcome for a dog park with WL Daybreak Rotary.
  - Significant financial impacts include moving irrigation, with upgrades required, high financial costs for fencing and accessing utilities.

### **NOTE:**

The dog park development in option 2 would not be conducive to be re-developed should a future location or other infrastructure become a priority for this area. The amenities required, parking, bleachers, irrigation and fencing would become permanent with option 2.

### ***Next Steps***

While both the Club and staff have identified that a dog park facility would be well served in Comer Park, it should be noted that this analysis is done in isolation from the broader community recreation

needs. The proposed 2026 capital projects (to be reviewed by Council later this year as part of the 2026 Budget process) include a project for an updated parks and trails master plan. Making any decision on specific park use prior to the development of this plan may infringe on future desired outcomes. Other groups (including the Indoor Multisport Facility Group) have identified Comer Park as a potential site for other uses. Given this broader need for recreation planning, and the reduced urgency from the Club on this project, staff recommend Council support the inclusion of a dog park (including information already submitted by the Club and the staff analysis done to-date) in the upcoming Parks and Trails Master Plan.

**Financial Considerations (Cost and Resource Allocation)**

- 1.  Yes, The Club’s proposal includes financial and in-kind support from the City of Williams Lake. This could range from \$5000.00 to \$250,000 pending final designs and fundraising efforts and cost to access utilities
- N/A

**Legislative Considerations (Applicable Policies and/or Bylaws)**

- Yes, There would need to be engagement with School District #27 if a dog park is considered in or adjacent too lands used by the School District #27 (Nesika Elementary School Field).
- N/A

**This project aligns with the following Focus Areas of Council’s Strategic Plan:**

- Collaboration and Partnerships
  - Indigenous Relations
  - Livability / Positive Atmosphere
  - Housing
  - Infrastructure
  - Organizational Effectiveness
- OR
- \*Core Service (not identified in Focus Areas, but necessary local government function)*

**This report has been prepared in consultation with:**

- Director of Municipal Services
- Manager of Planning and Development

**Approved for Agenda by:**

Chief Administrative Officer

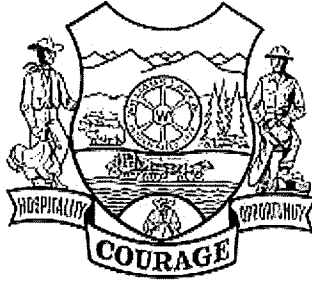
Respectfully submitted,

Stacey Miranda,

Director of Community Services

**Attachments:**

- 1. Resolution #277/25**
- 2. WL Daybreak Rotary Letter to Council**
- 3. 2010 Parks and Trails Master Plan page 21**
- 4. 2010 Parks and Trails Master Plan page 52**
- 5. Dog Park Location Matrix Summary**
- 6. Potential Location Map**



## CITY OF WILLIAMS LAKE

DATE &  
ITEM NO.

**July 15 2025-E1**

RES #

RES #277/25

---

**SUBJECT** Williams Lake Pickleball Club Society Partnership Proposal for New Outdoor Community Pickleball Courts and Williams Lake Daybreak Rotary Letter re: Comer Park Dog Park Proposal

Moved and Seconded

That the presentation from the Williams Lake Pickleball Club Society regarding a partnership proposal for the development of new pickleball courts in the City's Comer Park on Western Avenue across from Thompson Rivers University be received; and further, that Council direct staff to further investigate development and inclusion of an expanded pickleball facility within municipal park lands as requested, including options for locations and additional required amenities (i.e. washrooms, parking), and to work with the Club on their proposal and a fundraising / sponsorship agreement and grant opportunities with an initial goal of 2026 for project commencement; and further, that the letter from the Williams Lake Daybreak Rotary Club dated July 14, 2025 regarding a Dog Park Proposal for Comer Park be received and the requested staff report also include analysis on the Daybreak Rotary's dog park proposal.

CARRIED

### RECORD OF VOTE (UPON REQUEST)

YEAS \_\_\_\_\_

NAYS \_\_\_\_\_

**Rotary**   
Williams Lake Daybreak

City of Williams Lake  
450 Mart Street  
Williams Lake, BC

July 14, 2025

Dear Mayor Surinderpal Rathor  
Councilors Nelson, Lyons, Boehm, Moses, Flaspohler, Delaine  
y  
CAO Gary Muraca and Administration Staff

I write to you on behalf of the Williams Lake Daybreak Rotary Club to bring awareness to our desire to develop the Comer Park space into a dedicated dog park. We had plans of coming forward with this after further budgeting and designs were put in place so we could have a full-scale proposal to provide for you at the time of the presentation. As other desires were recently presented, we are writing this letter ahead of our completed report to simply express our vision for community growth and development.

The Williams Lake Daybreak Rotary Club, with consent from the City of Williams Lake, plans to re-develop the Comer Park to a full service "Rotary Dog Park" where you will expect to see proper dog park fencing/gate systems, covered seating areas, water stations, permanent commercial agility equipment, big dog and small dog areas, waste bins, and dog waste bag dispensers.

The Comer Park is often full, year-round, with dog owners and their furry friends, and is rarely seen empty.

This second dedicated dog park will diversify and spread-out available services in Williams Lake to become more reachable by less centralized neighborhoods. Although we have many locations to take our dogs for walks, most of them require leashes. Or those areas are part of our vast trail system that isn't suitable for all dogs (size or level of training/recall), or ownership mobility/fitness levels. The benefits of a full-service dog park versus the existing "plain jane" one we have will allow for more physical space for dogs to work off the built-up energy, a comfortable place for people to sit to encourage longer stays, as well as the addition of agility equipment to help provide mental stimulus for dogs who need more than physical exercise.

We all know that Williams Lake already has a dog park, but there are some caveats about it that create additional stress on the importance of a secondary option. From the Tribune article in 2012, when the Boitano Dog Park was discussed, it was being listed as a "plain jane" dog park just to get something into the community. At that time, three locations were considered (Boitano Park, Oliver Street Trailhead of the River Valley, and Stampede Grounds). The city decided that Boitano Park, between the skate park and picnic shelter, was the most suitable; with that decision, like any

decision, it comes with pros and cons. The common cons of the Boitanio Park site, as identified in the same Tribune article and still true today, is the safety of park users and sightlines to the park from the parking lot, and now with the Disc Golf Course, it is also restricted to growth. The treed area within the fenced area, although providing valuable shade, does pose visibility issues for owners to monitor their dog's behaviors and potential conflicts. It also poses a challenge for picking excrement and therefore leaving the space with sanitation issues which may or may not impact future dogs and their health.

The average size of a dog park in Canada is 1 to 5 acres. The combined total of both the small dog area and the large dog area is approximately 0.88 acres - 0.37 acres and 0.51 acres respectively. We are a far cry from a standard or a suitable size. The larger size of a dog park is important for many reasons. With more space, it helps to offset the risks associated with off-leash dog parks. These include, but are not limited to, risks such as health and environmental. Some health risks, such as disease transmission, are created by forcing dogs to be within close proximity if they choose to share the park space. Larger parks also provide the opportunity to spread out; behavioral risks can be amplified if dogs cannot spread out as needed, and aggression can grow in small spaces as well as dogs who are being trained to reduce their fear and anxiety may need the space to wander out on their own while they get accustomed to shared space with other dogs. These issues are not preventable when close proximity is non-optional.

Dog parks can also indirectly encourage tourism by enhancing a community's appeal and creating a sense of place. They can attract visitors who are seeking a pet-friendly destination, as a large portion of travelers are now including their dogs on their vacations. Although dog parks are not necessarily a reason to travel to a destination, it may be a consideration on a mid-travel stopping point to let your traveling companion a place to stretch their legs. Having a nice dog park facility could become a deciding factor in a lay-over decision when deciding between Williams Lake or neighboring communities.

The Williams Lake Daybreak Rotary Club thanks you for your consideration on this request for the use of this public space. To turn it into a dedicated dog park with all the amenities that a dog park could ever need. And to leave it as full-time access to anyone and everyone.

If this proposal is accepted by Mayor Rathor and City Council members, we will work quickly to finalize our budgeting and multi-phase plans to present for a final review.

Best Regards,

Andrew Sandberg  
President

Williams Lake Daybreak Rotary Williams Lake Daybreak



### 3.3.11 Waterfront

*The City centre has arguably no public access to the lake. This is one of the most notable deficiencies or gaps in the framework of parks, trails and outdoor recreation in Williams Lake. As noted earlier, the R.C. Cotton Site is a high profile undeveloped site with significant mixed use development potential that can facilitate a public waterfront right-of-way and thereby effectively link the lake and Scout Island to downtown.*

The CN Rail Right of Way is another obstacle preventing the City from effectively making the waterfront accessible to the public. Historically the City has always been divided physically by the rail line. Many communities in North America have worked actively with railway companies to provide safe and appealing public access to rail rights of way. *This opportunity needs to be explored by the City for the South Lakeside Drive area.*

Increasing boat launch areas around the lake or working with Scout Island to extend hours of the boat launch area is another priority for many users.

### 3.3.12 Dog Friendly

The City of Williams Lake does not currently have parks where dogs are permitted off leash. *This is a gap that has been consistently noted in feedback through the public consultation process.*

*A potential opportunity for public use of an off leash park may lie at the Stampede Park. Additional discussions however, are necessary between the appropriate parties.*

### 3.3.13 Wildland Conservancy

The health and vitality of the ecological environment of the Williams Lake River Valley, the lowest extremity of the San Jose watershed, is critically important, both within and outside of the City's boundaries.

Ongoing efforts to integrate management objectives must continue and need to be more comprehensive. Identifying a gap here is intended primarily to acknowledge the need to communicate the fundamental values of the environment within which we live, learn and play. The opportunity is to communicate a more comprehensive stewardship of the environment.

*Notwithstanding jurisdictional boundaries, there should be contiguous management of the official trails passing through Crown Land connecting to the river valley and lake. Collaboration with the Ministry of Culture, Tourism and the Arts should be pursued in managing issues related to land, forest health, use, education, and commercial opportunities. Hillside forest management policy and practice is critical to the recreational resilience of mountain biking, hiking, equestrian, and other related activities in Williams Lake.*

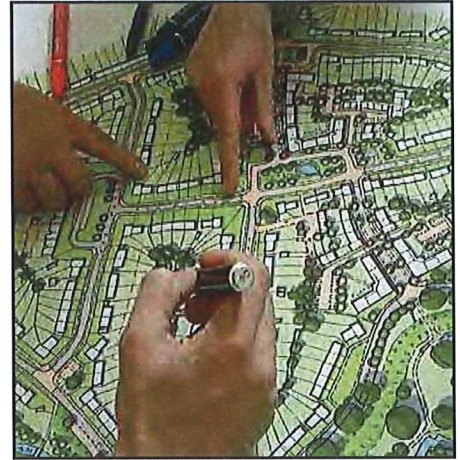
*Consideration of urban wildlife needs to be taken into account, including safe passage and crossings. Seasonal wildlife conflicts with people in the river valley are known to occur, as are conflicts with wildlife and vehicles at specific points along Highway 97.*



## 10. Park Design and CPTED Planning

As part of an overall strategy to develop park and trail standards for the City, the incorporation of CPTED principles is recommended. When applied to park and trails design, these principles – natural surveillance, natural access control, territoriality and maintenance – can act to create a general feeling of comfort and safety for parks and trail users and at the same time, reduce the potential for crime.

This recommendation complements and is consistent with the City's general recommended approach to utilizing CPTED principles in dealing with Parks and Conservation e.g. in **"Creating Our Future - Williams Lake Official Community Plan 2011"**.... "Consider CPTED principles in the design and development of Parks and Conservation Areas".



## 11. Off Leash Dog Parks

The creation of small off-leash areas that are properly fenced, signed and placed a reasonable distance from the commercial and residential areas is a recommended strategy to meet the needs of pet owners in the community. This option provides a safe place to exercise pets and at the same time, provides enforcement officers with manageable areas to assist in maintaining the safety and security of users.

Since the creation of off-leash dog parks is new to the City of Williams Lake, it may be prudent to first consider a "trial" off-leash park. By monitoring its use, the City will be in a position to ascertain demand for such parks, as well as determine the needs of pet owners, assess maintenance costs, etc. The trial period can ultimately lead to determining if the park will serve the longer term needs of the community.



The City should review possible sites where experimenting with a trial park may be suitable. Two potential locations are offered in this report. One of these is Glendale Park (4). The other is the existing baseball diamond in Stampede Park (20). The Kennel Club of Williams Lake has requested permission to utilize this latter area for its activities.



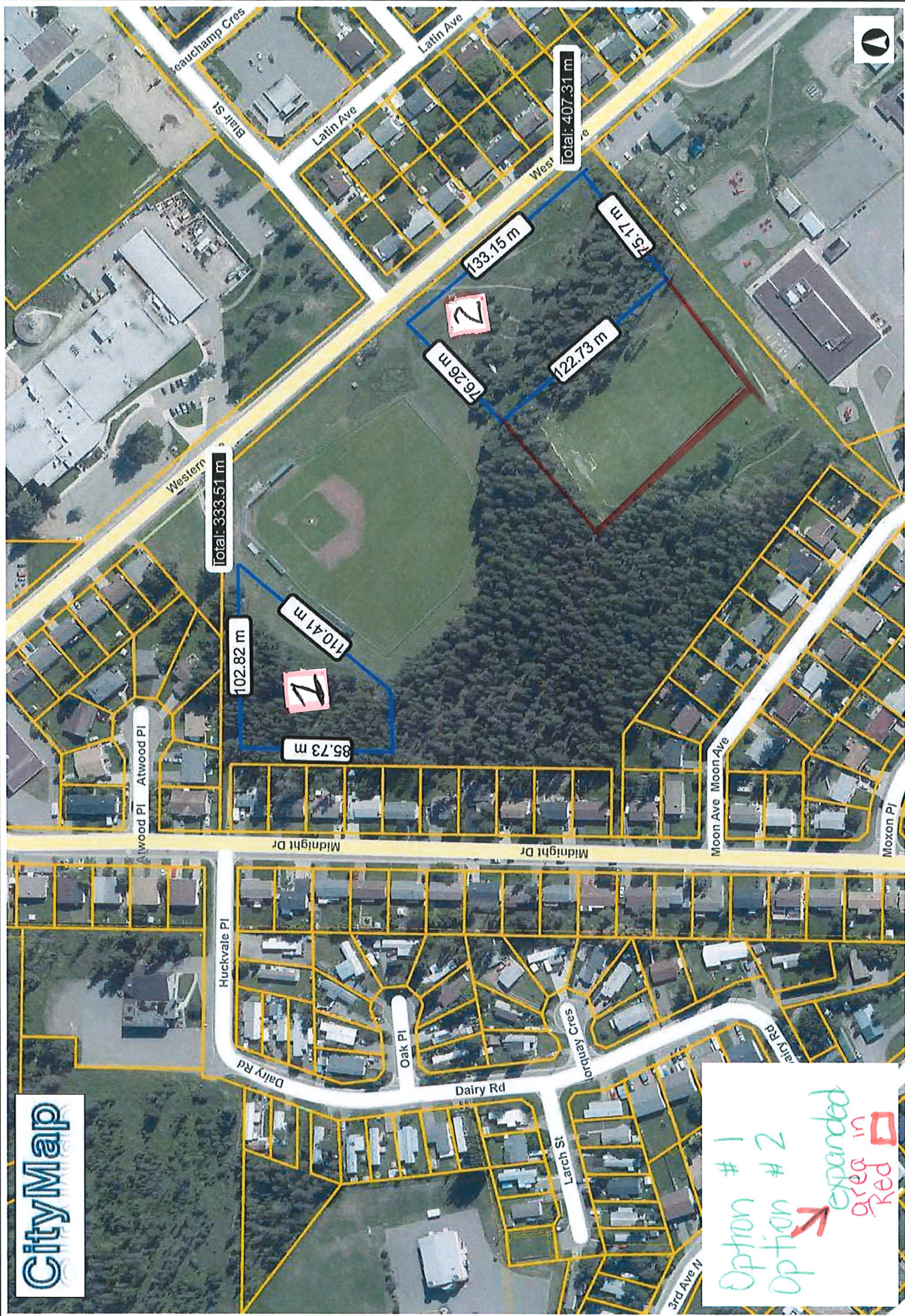
## 12. Cemetery Expansions

The current cemetery lands are reaching capacity and land for a new municipal cemetery is required. A potential site has been recommended on Crown lands south of the existing Westridge community (40). A preliminary concept envisages a site of approximately 15 acres (6 ha) Initial discussions with provincial authorities should be pursued and a public process developed in anticipation of strong interest in this proposal. The City's official document **"Creating Our Future - Williams Lake Official Community Plan 2011"** - identifies the lands in this area as part of a Special Study Area. An amendment may need to be made to the document to indicate that a cemetery use will be considered in this "Area".



### Dog Park Location Matrix

1 = low 10= high	Comer Park	Stampede Grounds ball field) (Old	351 Hodgson Road (Lower portion below identified slide)	Patrick Reid Park	Dairy Fields (City owner portions)	Kinsmens Park
Existing Infrastructure Parking & Ammenities	5.3	5.6	4.3	4.3	3	7
Access / Location, OCP / Zoning, Growth of Club, Parking	6.6	5.3	4.6	4.3	3.6	7
Future Planning / Future Park Plan	8	4.6	6.3	5.6	4	5
Costs (pre and post construction) Terrain / Size	7.6	6.3	5.6	5.6	3.6	5
Community Impact / <30 Minute / Noise	7.6	6.3	7	6.3	6.6	4.3
Score 1 -10	35.1	28.1	27.8	26.1	20.8	28.3



Option #1  
 Option #2  
 expanded area in Red



1:4,514

All data, information and maps are provided 'as is' without guarantee of accuracy. Lot line locations as shown are approximate and cannot be used to establish legal boundaries.

Notes

Comer Park