

From: Margo Wagner
Sent: March 26, 2026 5:34 PM
To: CRD Mailbox
Subject: Fwd: Notice - Annual Vegetation Management Program
Attachments: Image_20250321_105328_680_1.jpeg; Image_20250321_105328_680_2.jpeg; CN Right-Of-Way Vegetation Management 2026 - British Columbia.pdf; Vegetation_4.046X5_BC_2026.pdf

Please include this on the next Board agenda. Thx

Margo Wagner
Chair Cariboo Regional District
Area H Director
Chair Northern Development Initiative Trust
Call 250-397-0016 or 250-706-0639

Begin forwarded message:

From: CN Public Inquiry Line <CONTACT@cn.ca>
Date: March 26, 2026 at 11:04:14 AM PDT
To: Margo Wagner <mwagner@cariboord.ca>
Subject: Notice - Annual Vegetation Management Program
Reply-To: CN Public Inquiry Line <noreply_contact@cn.ca>

Notice - Annual Vegetation Management Program

Dear Chair Wagner,

At CN, we are committed to operating a safe and efficient railway while fostering trust and collaboration with the communities we serve. As part of this commitment, we are reaching out to inform you of our upcoming vegetation management activities in your area, scheduled to take place between April and October 2026. You can find a regularly updated schedule at www.cn.ca/vegetation.

Vegetation management is a crucial component of railway safety and regulatory compliance. In accordance with Transport Canada's requirements, our program helps mitigate potential risks to railway operations. By proactively managing vegetation, we enhance safety for both rail operations and the surrounding communities.

For more details, please find enclosed a letter, which provides additional insights into the program. Should you have any questions or concerns, please don't hesitate to reach out.

Best regards,



Box 8100
Montréal, Québec Canada
H3C 3N4

Boite 8100
Montréal, Québec/Canada
H3C 3N4

March 26, 2026

RE: CN RIGHT-OF-WAY VEGETATION MANAGEMENT

Dear Mayor,

At CN, we are committed to operating a safe and efficient railway while fostering trust and collaboration with the communities we serve. As part of this commitment, we are reaching out to inform you of our upcoming vegetation management activities in your area, scheduled to take place between April and October 2026. You can find a regularly updated schedule at www.cn.ca/vegetation.

Vegetation management is a crucial component of railway safety and regulatory compliance. In accordance with Transport Canada's requirements, our program mitigates potential risks to railway operations. By proactively managing vegetation, we enhance safety for both rail operations and the surrounding communities.

Management Strategies

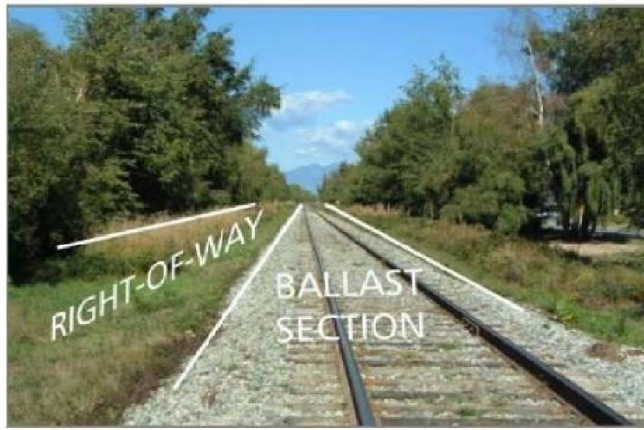
CN manages vegetation using both chemical and mechanical methods to ensure regulatory compliance and maintain safe railway operations. We are sensitive to concerns your community may have regarding chemical vegetation management and at CN, we strive to safeguard our neighbouring communities and the environment.

The track infrastructure is composed of two main sections, the 24-foot ballast section (which is primarily gravel and supports the track structure) and the right of way portion (which is the area outside of the ballast section to the CN property boundary). The use of pesticides is intended within the area to which the pest management plan applies.

Vegetation management using herbicides will focus on the ballast section, and as needed, selected areas around signals and communications equipment that are critical for safe railway operations.

Herbicide application on the ballast section is completed with spray trucks or spray trains fitted with downcast nozzles that spray a short distance above the ground surface with shrouded booms, specially designed to limit herbicide drift to non-target areas.

The right-of-way section may be maintained using mechanical control methods such as mowing, or brush cutting and may include the selected and localized use of herbicides to control invasive plant species, including noxious weeds.



CN has retained professional contractors qualified to undertake herbicide application and mechanical vegetation management on CN property. They are required to follow all laws and regulations that apply to CN, including but not limited to all provisions and requirements outlined in CN's Integrated Pest Management Plan, which is confirmed by the province of BC.

Inquiries

Should your community have any noxious weed removal requests, we ask that you contact CN's Public Inquiry Line at contact@cn.ca or fill out the form at CN.ca/vegetation before June 1, 2026 with the specific information and location. CN will make every effort to include those locations as part of our 2026 Vegetation Management Program. All notices sent after the above-mentioned date will be included in the 2027 Vegetation Management Plan.

We look forward to working with you and answering any questions you may have regarding our vegetation control activities in your community. Please find attached the notices CN is publishing in local papers to advise the public. We would kindly ask that you post copies on your community's website and at City Hall or other central locations for a wider distribution.

For any questions or more information, please contact the CN Public Inquiry Line by telephone at 1-888-888-5909, or by email at contact@cn.ca.

Please also find a list of FAQs regarding the program that may be of further assistance at www.cn.ca/en/vegetation.

COMMUNITY NOTICE



ANNUAL VEGETATION MANAGEMENT PROGRAM

Each year, CN is required to manage vegetation on its right-of-way. Managing this vegetation contributes to mitigating fire risks and enhances the efficiency of inspection of track infrastructure.

To ensure safe railway operations, CN will conduct its annual vegetation management program on its rail lines in the province of British Columbia. A certified professional (Davey Tree Expert Company of Canada, Ltd., 1-800-465-6367) will apply herbicides on and around the railway tracks (primarily along the 24-foot graveled area/ballast). The use of pesticides is intended within the area to which the pest management plan applies. All product requirements for setbacks in the vicinity of dwellings, aquatic environments, and municipal water supplies will be met.

CN only uses herbicides that have been approved for use in Canada and in the province within which they are applied.

The program is expected to take place from April to October 2026.

All CN land is private property, accessible to CN employees and approved contractors only.

Visit www.cn.ca/vegetation for more information or to make an inquiry, contact the CN Public Inquiry Line at contact@cn.ca or 1-888-888-5909.

CN.CA